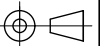



Table of Contents

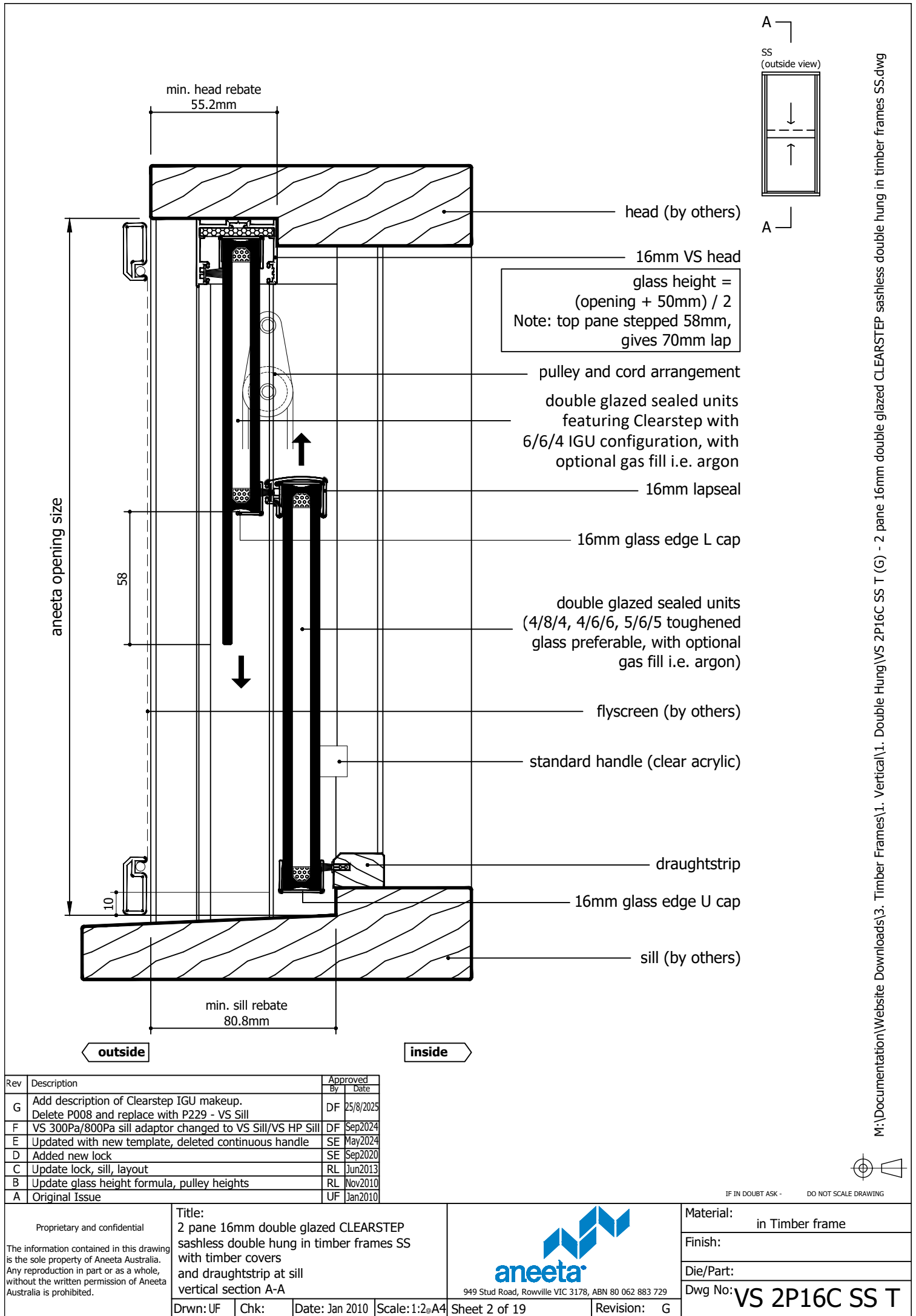
Page	View	Cover Type	Sill Type
2	Vertical Section	Timber covers	Draughtstrip
3	Vertical Section	Timber covers	Draughtstrip x 2
4	Vertical Section	Timber covers	VS Sill
5	Vertical Section	Timber covers	VS HP Sill
6	Vertical Section	Timber covers	None
7	Horizontal Section	Timber covers	-
8	Vertical Section	Aluminium covers outside, timber covers inside	Draughtstrip
9	Vertical Section	Aluminium covers outside, timber covers inside	Draughtstrip x 2
10	Vertical Section	Aluminium covers outside, timber covers inside	VS Sill
11	Vertical Section	Aluminium covers outside, timber covers inside	VS HP Sill
12	Vertical Section	Aluminium covers outside, timber covers inside	None
13	Horizontal Section	Aluminium covers outside, timber covers inside	-
14	Vertical Section	Aluminium covers	Draughtstrip
15	Vertical Section	Aluminium covers	Draughtstrip x 2
16	Vertical Section	Aluminium covers	VS Sill
17	Vertical Section	Aluminium covers	VS HP Sill
18	Vertical Section	Aluminium covers	None
19	Horizontal Section	Aluminium covers	-

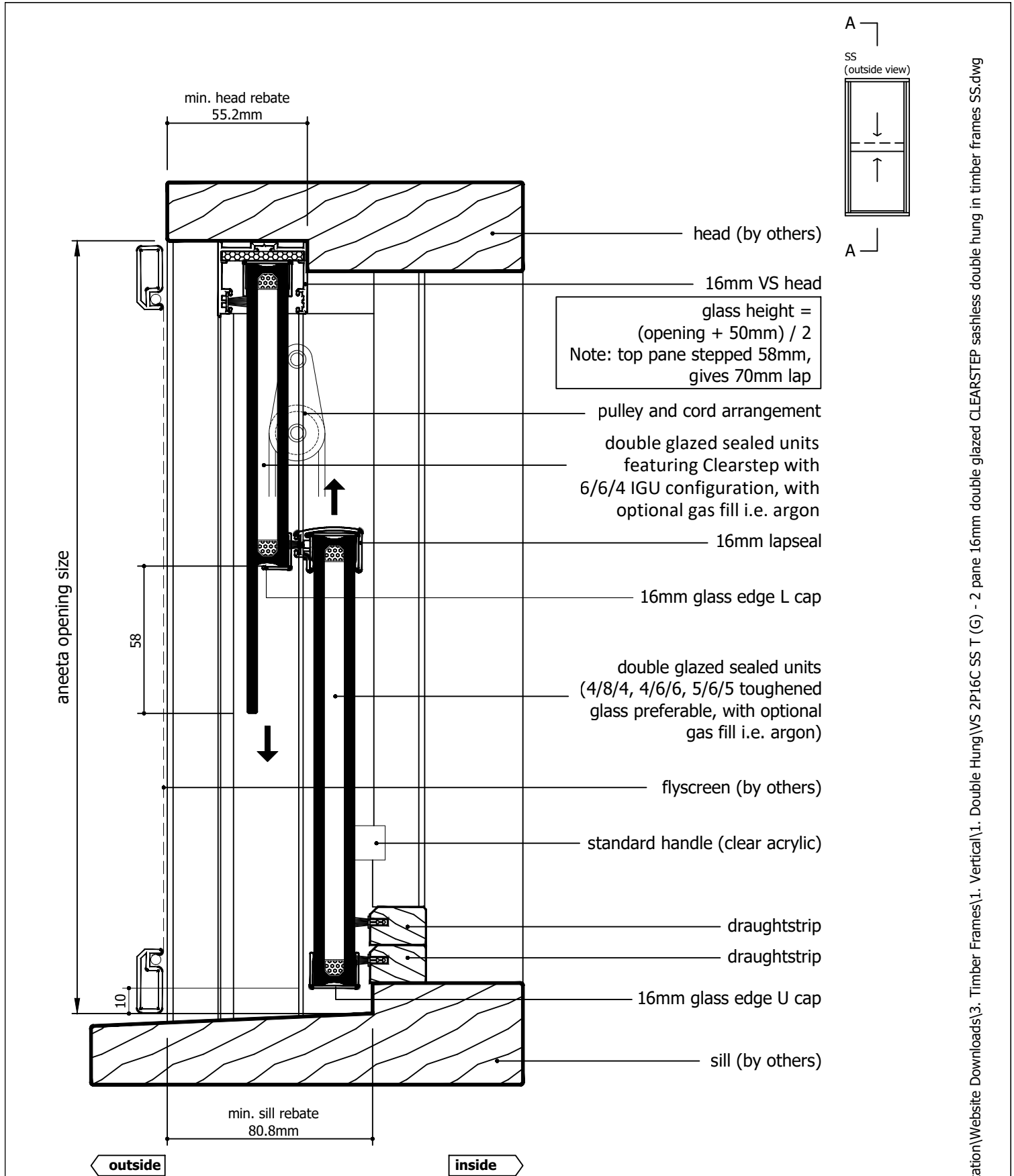
Rev	Description	Approved By	Date
G	Add description of Clearstep IGU makeup. Delete P008 and replace with P229 - VS Sill	DF	25/8/2025
F	VS 300Pa/800Pa sill adaptor changed to VS Sill/VS HP Sill	DF	Sep2024
E	Updated with new template, deleted continuous handle	SE	May2024
D	Added new lock	SE	Sep2020
C	Update lock, sill, layout	RL	Jun2013
B	Update glass height formula, pulley heights	RL	Nov2010
A	Original Issue	UF	Jan2010



IF IN DOUBT ASK - DO NOT SCALE DRAWING

<p>Proprietary and confidential</p> <p>The information contained in this drawing is the sole property of Aneeta Australia. Any reproduction in part or as a whole, without the written permission of Aneeta Australia is prohibited.</p>	<p>Title: 2 pane 16mm double glazed CLEARSTEP sashless double hung in timber frames SS</p>			 <p>949 Stud Road, Rowville VIC 3178, ABN 80 062 883 729</p>		Material:	in Timber frame
						Finish:	
						Die/Part:	
						Dwg No:	VS 2P16C SS T
Drwn: UF	Chk:	Date: Jan 2010	Scale: 1:2@A4	Sheet 1 of 19	Revision: G		

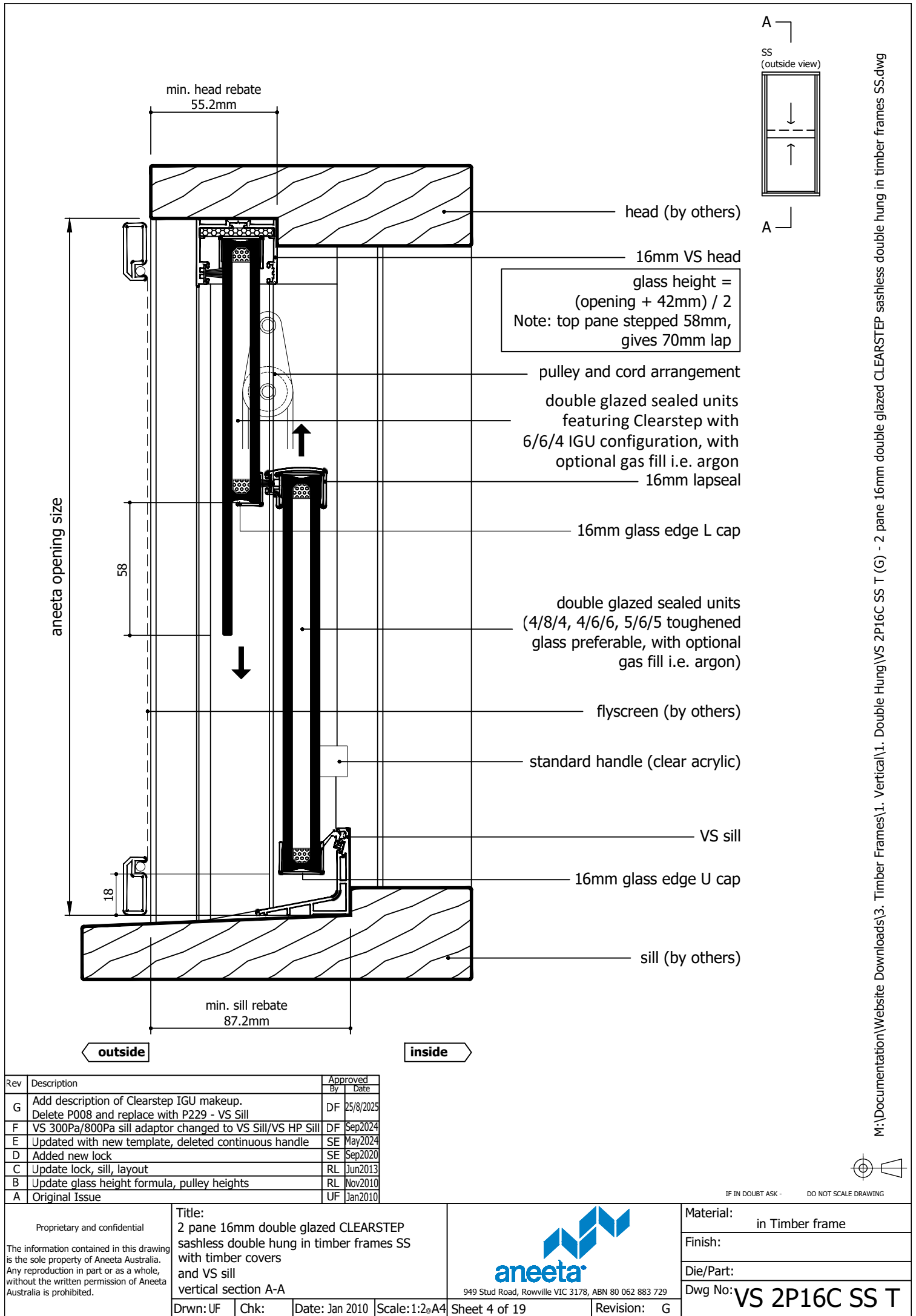


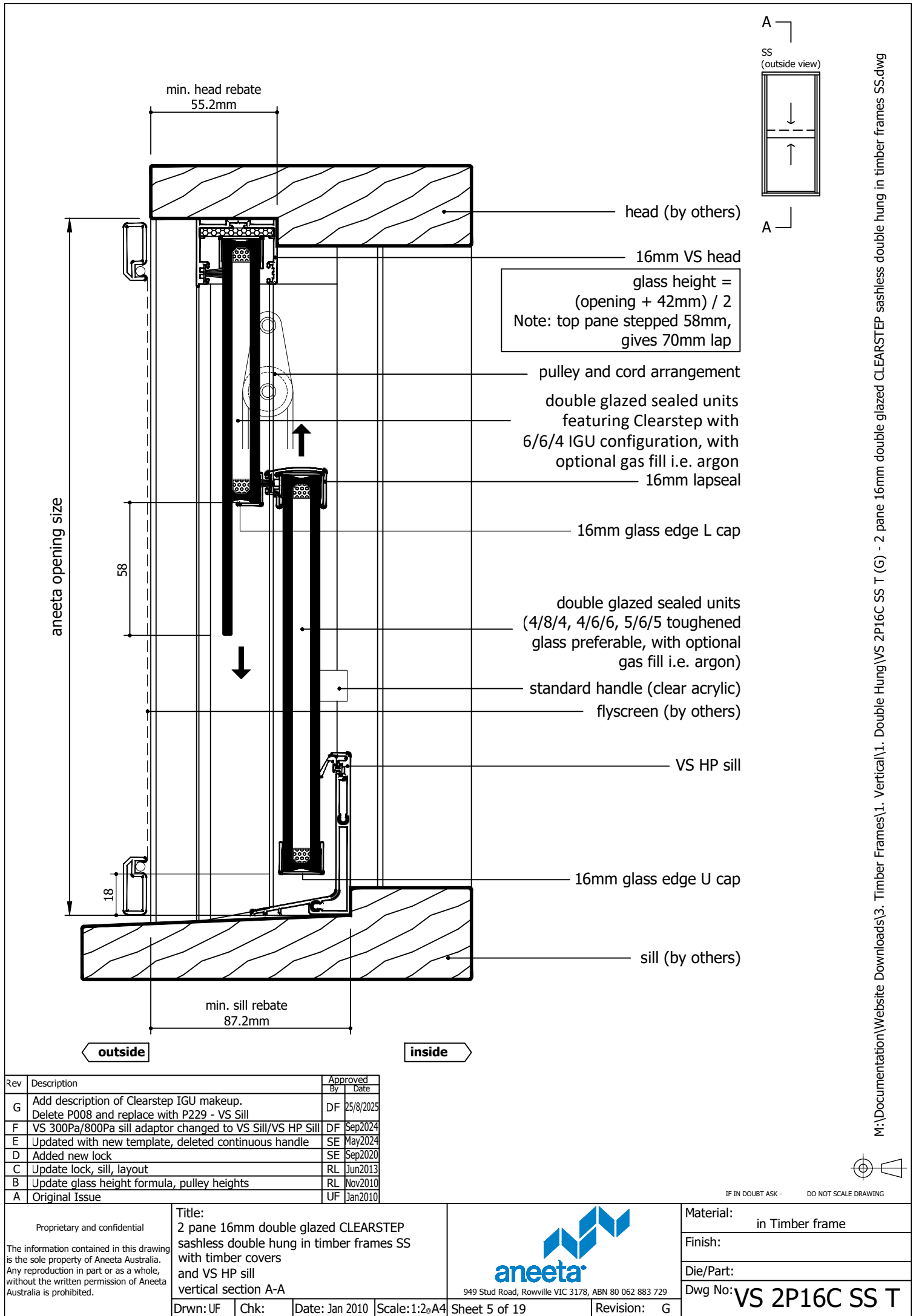


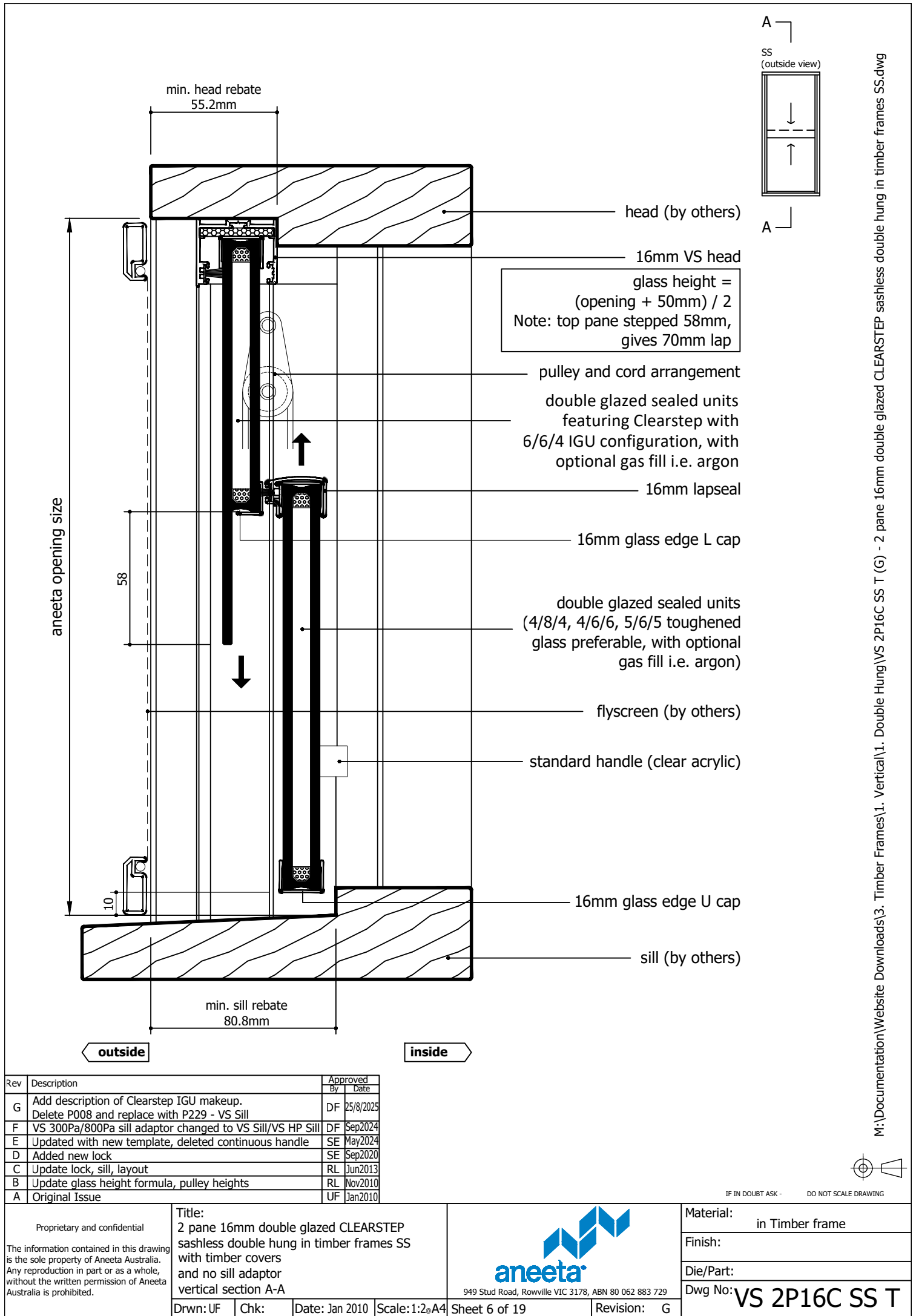
Rev	Description	Approved	
		By	Date
G	Add description of Clearstep IGU makeup. Delete P008 and replace with P229 - VS Sill	DF	25/8/2025
F	VS 300Pa/800Pa sill adaptor changed to VS Sill/VS HP Sill	DF	Sep2024
E	Updated with new template, deleted continuous handle	SE	May2024
D	Added new lock	SE	Sep2020
C	Update lock, sill, layout	RL	Jun2013
B	Update glass height formula, pulley heights	RL	Nov2010
A	Original Issue	UF	Jan2010

<div>Proprietary and confidential</div> <div>The information contained in this drawing is the sole property of Aneeta Australia. Any reproduction in part or as a whole, without the written permission of Aneeta Australia is prohibited.</div>	<div>Title: 2 pane 16mm double glazed CLEARSTEP sashless double hung in timber frames SS with timber covers and 2 x draughtstrip at sill vertical section A-A</div> <div><div><div></div><div>aneeta</div></div><div>949 Stud Road, Rowville VIC 3178, ABN 80 062 883 729</div></div>				Material: in Timber frame	
					Finish:	
					Die/Part:	
					Dwg No:	
					VS 2P16C SS T	
Drwn: UF	Chk:	Date: Jan 2010	Scale: 1:2@A4	Sheet 3 of 19	Revision: G	

M:\Documentation\Website Downloads\3. Timber Frames\1. Vertical\1. Double Hung\VS 2P16C SS T (G) - 2 pane 16mm double glazed CLEARSTEP sashless double hung in timber frames SS.dwg







glass width = opening - 40mm

aneeta opening size

flyscreen (optional by others)

16mm combination tee

timber cover outside (optional)

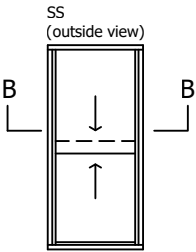
top pane

bottom pane

timber cover

lock

jamb (by others)



outside

101.3

inside

Rev	Description	Approved By	Date
G	Add description of Clearstep IGU makeup. Delete P008 and replace with P229 - VS Sill	DF	25/8/2025
F	VS 300Pa/800Pa sill adaptor changed to VS Sill/VS HP Sill	DF	Sep2024
E	Updated with new template, deleted continuous handle	SE	May2024
D	Added new lock	SE	Sep2020
C	Update lock, sill, layout	RL	Jun2013
B	Update glass height formula, pulley heights	RL	Nov2010
A	Original Issue	UF	Jan2010

Proprietary and confidential

The information contained in this drawing is the sole property of Aneeta Australia. Any reproduction in part or as a whole, without the written permission of Aneeta Australia is prohibited.

Title:
2 pane 16mm double glazed CLEARSTEP sashless double hung in timber frames SS with timber covers

horizontal section B-B

Drwn: UF Chk: Date: Jan 2010 Scale: 1:10A4

aneeta

949 Stud Road, Rowville VIC 3178, ABN 80 062 883 729

Sheet 7 of 19

Material: in Timber frame

Finish:

Die/Part:

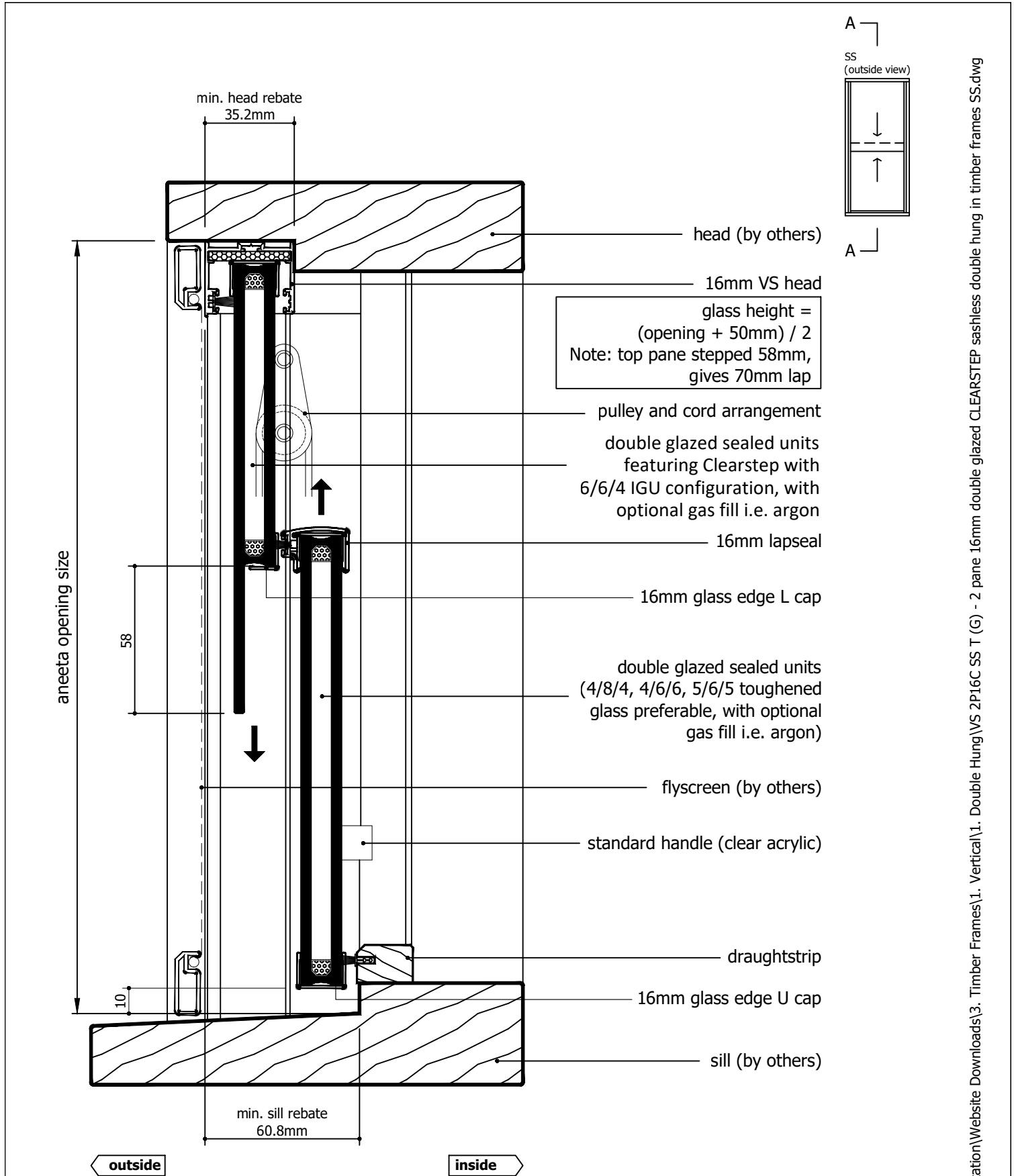
Dwg No: VS 2P16C SS T

Revision: G



IF IN DOUBT ASK - DO NOT SCALE DRAWING

M:\Documentation\Website Downloads\3. Timber Frames\1. Vertical\1. Double Hung\VS 2P16C SS T (G) - 2 pane 16mm double glazed CLEARSTEP sashless double hung in timber frames SS.dwg



Rev	Description	Approved	
		By	Date
G	Add description of Clearstep IGU makeup. Delete P008 and replace with P229 - VS Sill	DF	25/8/2025
F	VS 300Pa/800Pa sill adaptor changed to VS Sill/VS HP Sill	DF	Sep2024
E	Updated with new template, deleted continuous handle	SE	May2024
D	Added new lock	SE	Sep2020
C	Update lock, sill, layout	RL	Jun2013
B	Update glass height formula, pulley heights	RL	Nov2010
A	Original Issue	UF	Jan2010

<div>Proprietary and confidential</div> <div>The information contained in this drawing is the sole property of Aneeta Australia. Any reproduction in part or as a whole, without the written permission of Aneeta Australia is prohibited.</div>	<div>Title: 2 pane 16mm double glazed CLEARSTEP sashless double hung in timber frames SS with aluminium covers outside, timber covers inside, and draughtstrip at sill vertical section A-A</div> <div><div><div></div><div>aneeta</div></div><div>949 Stud Road, Rowville VIC 3178, ABN 80 062 883 729</div></div>				Material: in Timber frame	
					Finish:	
					Die/Part:	
					Dwg No: VS 2P16C SS T	
	Drwn: UF	Chk:	Date: Jan 2010	Scale: 1:2@A4	Sheet 8 of 19	Revision: G

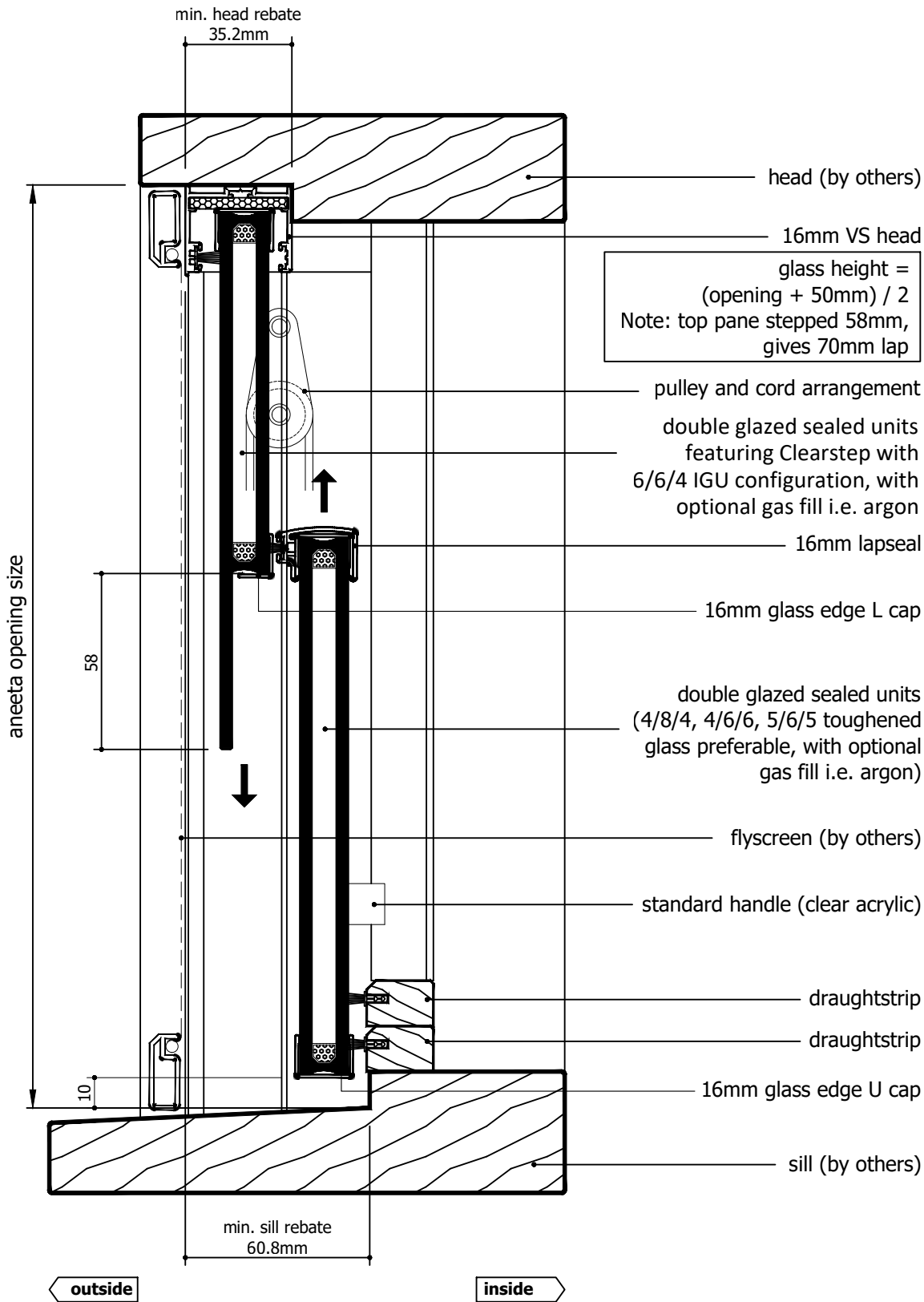
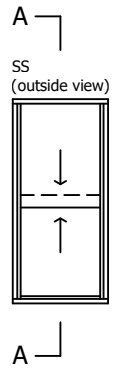
Date: Jan 2010 Scale: 1:20 A4

Sheet 8 of 19




IF IN DOUBT ASK - DO NOT SCALE DRAWING

M:\Documentation\Website Downloads\3. Timber Frames\1. Vertical\1. Double Hung\VS 2P16C SS T (G) - 2 pane 16mm double glazed CLEARSTEP sashless double hung in timber frames SS.dwg



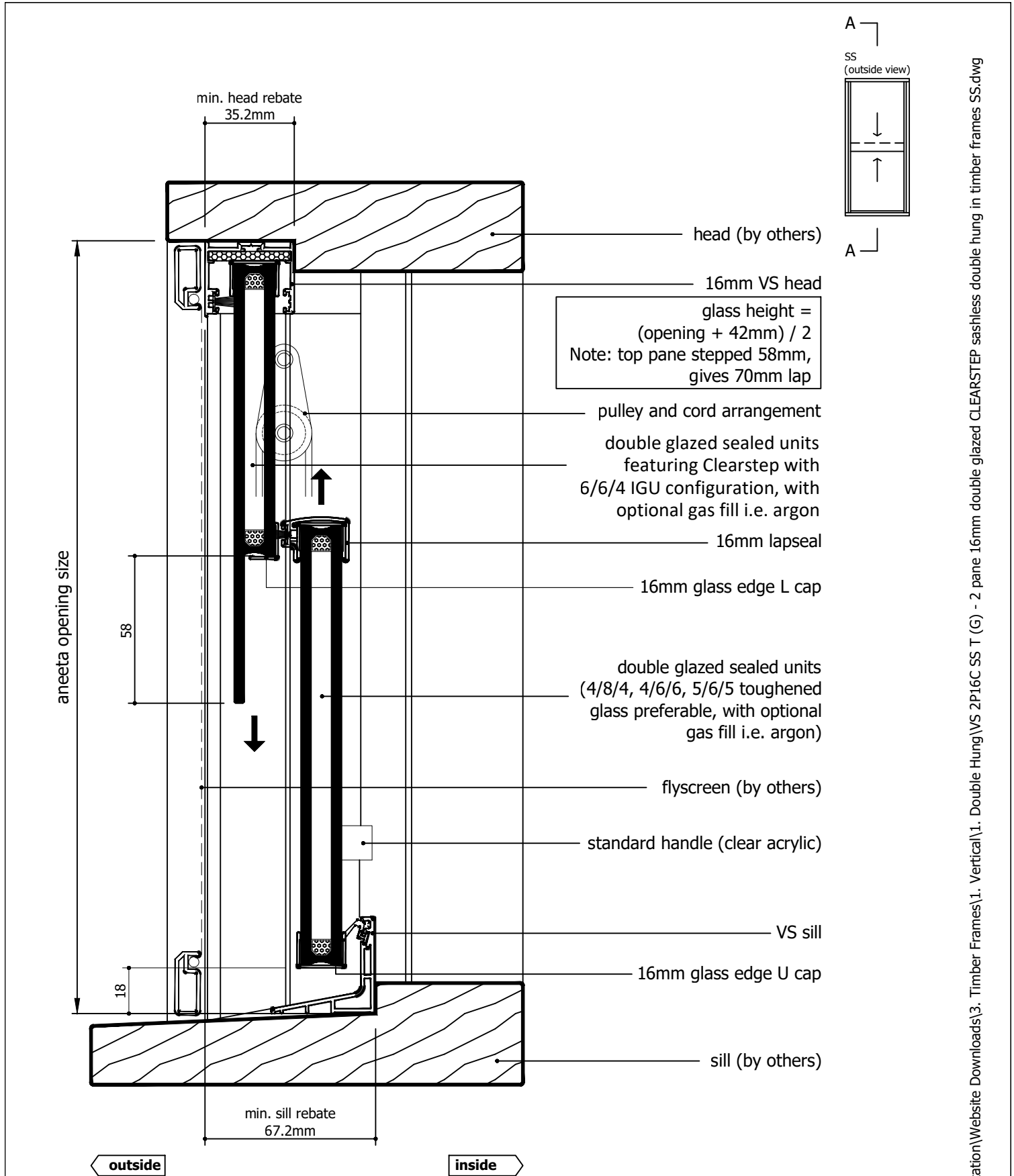
Rev	Description	Approved By	Date
G	Add description of Clearstep IGU makeup. Delete P008 and replace with P229 - VS Sill	DF	25/8/2025
F	VS 300Pa/800Pa sill adaptor changed to VS Sill/VS HP Sill	DF	Sep2024
E	Updated with new template, deleted continuous handle	SE	May2024
D	Added new lock	SE	Sep2020
C	Update lock, sill, layout	RL	Jun2013
B	Update glass height formula, pulley heights	RL	Nov2010
A	Original Issue	UF	Jan2010

Proprietary and confidential The information contained in this drawing is the sole property of Aneeta Australia. Any reproduction in part or as a whole, without the written permission of Aneeta Australia is prohibited.	Title: 2 pane 16mm double glazed CLEARSTEP sashless double hung in timber frames SS with aluminium covers outside, timber covers inside, and 2 x draughtstrip at sill vertical section A-A				 949 Stud Road, Rowville VIC 3178, ABN 80 062 883 729		Material: in Timber frame	
							Finish:	
							Die/Part:	
							Dwg No: VS 2P16C SS T	
Drwn: UF		Chk:	Date: Jan 2010	Scale: 1:2@A4	Sheet 9 of 19		Revision:	G


M:\Documentation\Website Downloads\3. Timber Frames\1. Double Hung\VS 2P16C SS T (G) - 2 pane 16mm double glazed CLEARSTEP sashless double hung in timber frames SS.dwg



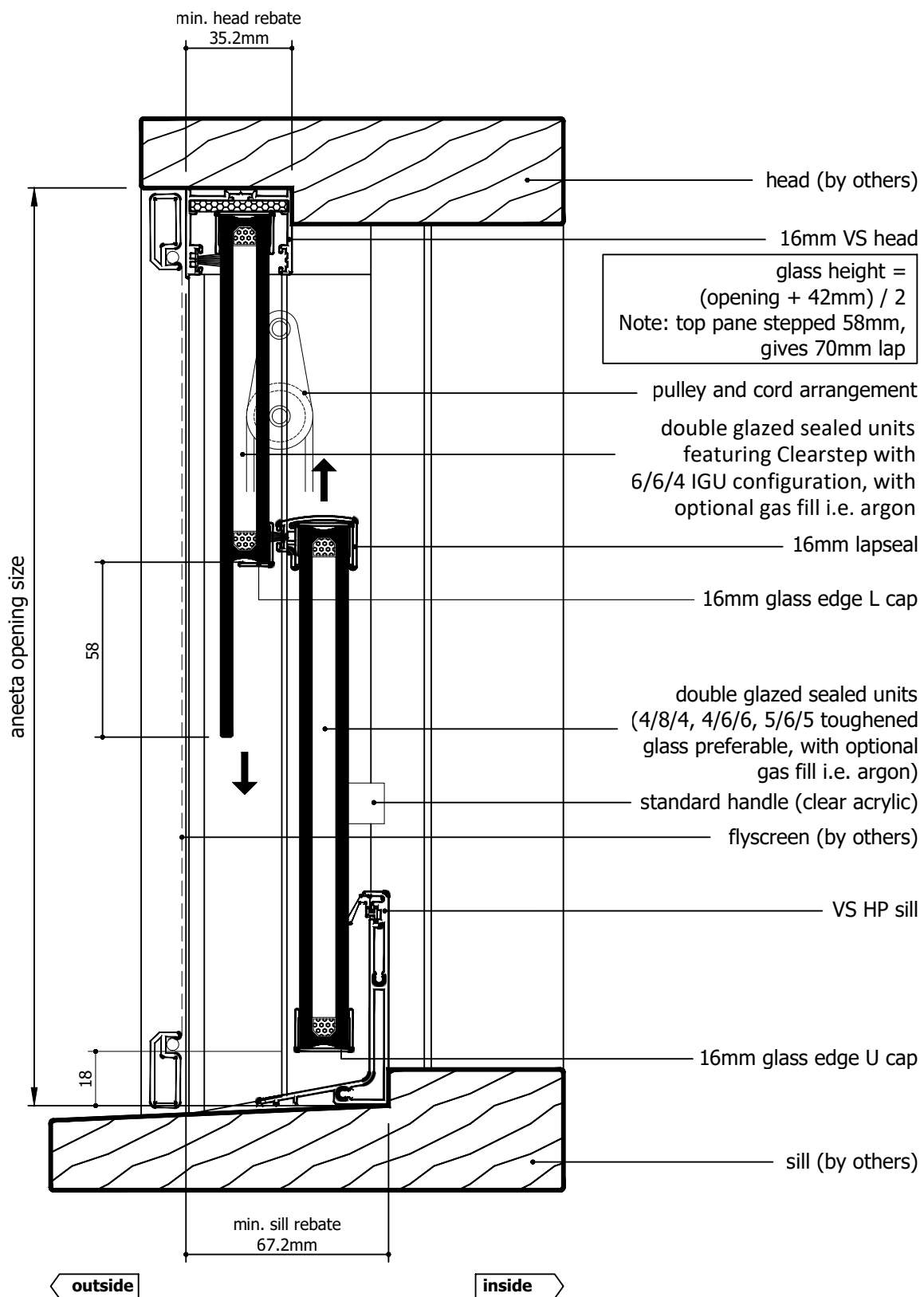
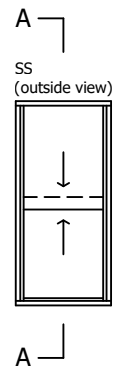
IF IN DOUBT ASK - DO NOT SCALE DRAWING



Rev	Description	Approved By	Date
G	Add description of Clearstep IGU makeup. Delete P008 and replace with P229 - VS Sill	DF	25/8/2025
F	VS 300Pa/800Pa sill adaptor changed to VS Sill/VS HP Sill	DF	Sep2024
E	Updated with new template, deleted continuous handle	SE	May2024
D	Added new lock	SE	Sep2020
C	Update lock, sill, layout	RL	Jun2013
B	Update glass height formula, pulley heights	RL	Nov2010
A	Original Issue	UF	Jan2010

Proprietary and confidential The information contained in this drawing is the sole property of Aneeta Australia. Any reproduction in part or as a whole, without the written permission of Aneeta Australia is prohibited.	Title: 2 pane 16mm double glazed CLEARSTEP sashless double hung in timber frames SS with aluminium covers outside, timber covers inside, and VS sill vertical section A-A		 949 Stud Road, Rowville VIC 3178, ABN 80 062 883 729		Material:	in Timber frame
					Finish:	
					Die/Part:	
					Dwg No:	VS 2P16C SS T
Drwn: UF	Chk:	Date: Jan 2010	Scale: 1:2@A4	Sheet 10 of 19	Revision:	G


M:\Documentation\Website Downloads\3. Timber Frames\1. Vertical\1. Double Hung\VS 2P16C SS T (G) - 2 pane 16mm double glazed CLEARSTEP sashless double hung in timber frames SS.dwg



Rev	Description	Approved By	Date
G	Add description of Clearstep IGU makeup. Delete P008 and replace with P229 - VS Sill	DF	25/8/2025
F	VS 300Pa/800Pa sill adaptor changed to VS Sill/VS HP Sill	DF	Sep2024
E	Updated with new template, deleted continuous handle	SE	May2024
D	Added new lock	SE	Sep2020
C	Update lock, sill, layout	RL	Jun2013
B	Update glass height formula, pulley heights	RL	Nov2010
A	Original Issue	UF	Jan2010

Proprietary and confidential
The information contained in this drawing is the sole property of Aneeta Australia. Any reproduction in part or as a whole, without the written permission of Aneeta Australia is prohibited.

Title:
2 pane 16mm double glazed CLEARSTEP sashless double hung in timber frames SS inside, and VS HP sill vertical section A-A


949 Stud Road, Rowville VIC 3178, ABN 80 062 883 729

Drwn: UF Chk: Date: Jan 2010 Scale: 1:20A4 Sheet 11 of 19 Revision: G

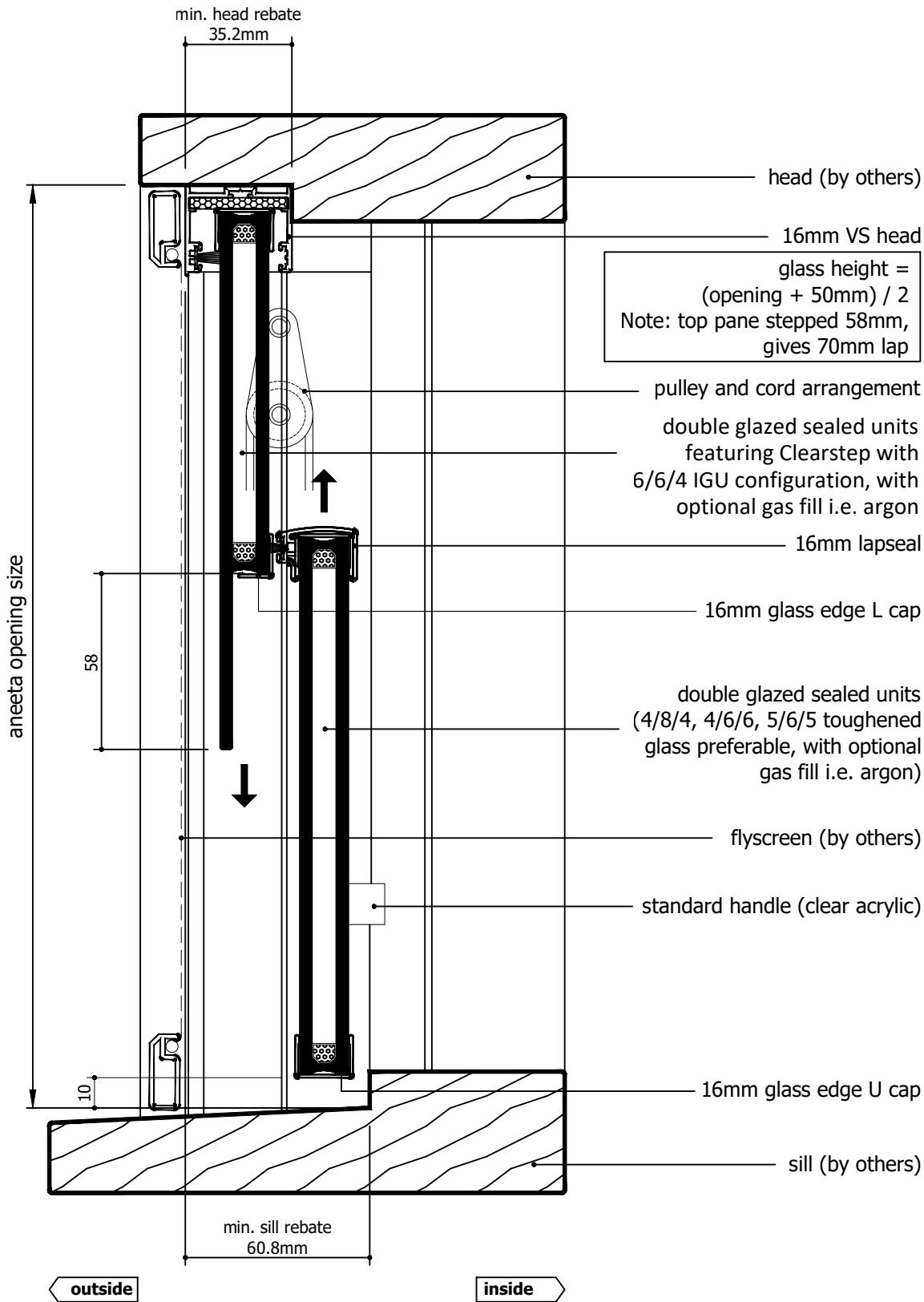
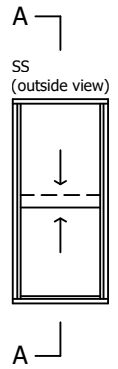
Material:
in Timber frame

Finish:


Die/Part:

Dwg No: VS 2P16C SS T

M:\Documentation\Website Downloads\3. Timber Frames\1. Double Hung\VS 2P16C SS T (G) - 2 pane 16mm double glazed CLEARSTEP sashless double hung in timber frames SS.dwg



Rev	Description	Approved	
		By	Date
G	Add description of Clearstep IGU makeup. Delete P008 and replace with P229 - VS Sill	DF	25/8/2025
F	VS 300Pa/800Pa sill adaptor changed to VS Sill/VS HP Sill	DF	Sep2024
E	Updated with new template, deleted continuous handle	SE	May2024
D	Added new lock	SE	Sep2020
C	Update lock, sill, layout	RL	Jun2013
B	Update glass height formula, pulley heights	RL	Nov2010
A	Original Issue	UF	Jan2010

<p>Proprietary and confidential</p> <p>The information contained in this drawing is the sole property of Aneeta Australia. Any reproduction in part or as a whole, without the written permission of Aneeta Australia is prohibited.</p>	<p>Title: 2 pane 16mm double glazed CLEARSTEP sashless double hung in timber frames SS with aluminium covers outside, timber covers inside, and 800Pa sill adaptor vertical section A-A</p>	 <p>949 Stud Road, Rowville VIC 3178, ABN 80 062 883 729</p>	Material: in Timber frame	
			Finish:	
			Die/Part:	
			Dwg No: VS 2P16C SS T	
			Revision: G	
Drwn: UF	Chk:	Date: Jan 2010	Scale: 1:2@A4	Sheet 12 of 19

M:\Documentation\Website Downloads\3. Timber Frames\1. Vertical\1. Double Hung\VS 2P16C SS T (G) - 2 pane 16mm double glazed CLEARSTEP sashless double hung in timber frames SS.dwg

glass width = opening - 40mm

aneeta opening size

flyscreen (optional by others)

16mm combination tee

top pane

bottom pane

timber cover

lock

jamb (by others)

SS
(outside view)


outside

inside

80.3

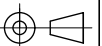
Rev	Description	Approved	
		By	Date
G	Add description of Clearstep IGU makeup. Delete P008 and replace with P229 - VS Sill	DF	25/8/2025
F	VS 300Pa/800Pa sill adaptor changed to VS Sill/VS HP Sill	DF	Sep2024
E	Updated with new template, deleted continuous handle	SE	May2024
D	Added new lock	SE	Sep2020
C	Update lock, sill, layout	RL	Jun2013
B	Update glass height formula, pulley heights	RL	Nov2010
A	Original Issue	UF	Jan2010

Proprietary and confidential The information contained in this drawing is the sole property of Aneeta Australia. Any reproduction in part or as a whole, without the written permission of Aneeta Australia is prohibited.	Title: 2 pane 16mm double glazed CLEARSTEP sashless double hung in timber frames SS with aluminium covers outside, timber covers inside horizontal section B-B		
	Drwn: UF	Chk:	Date: Jan 2010

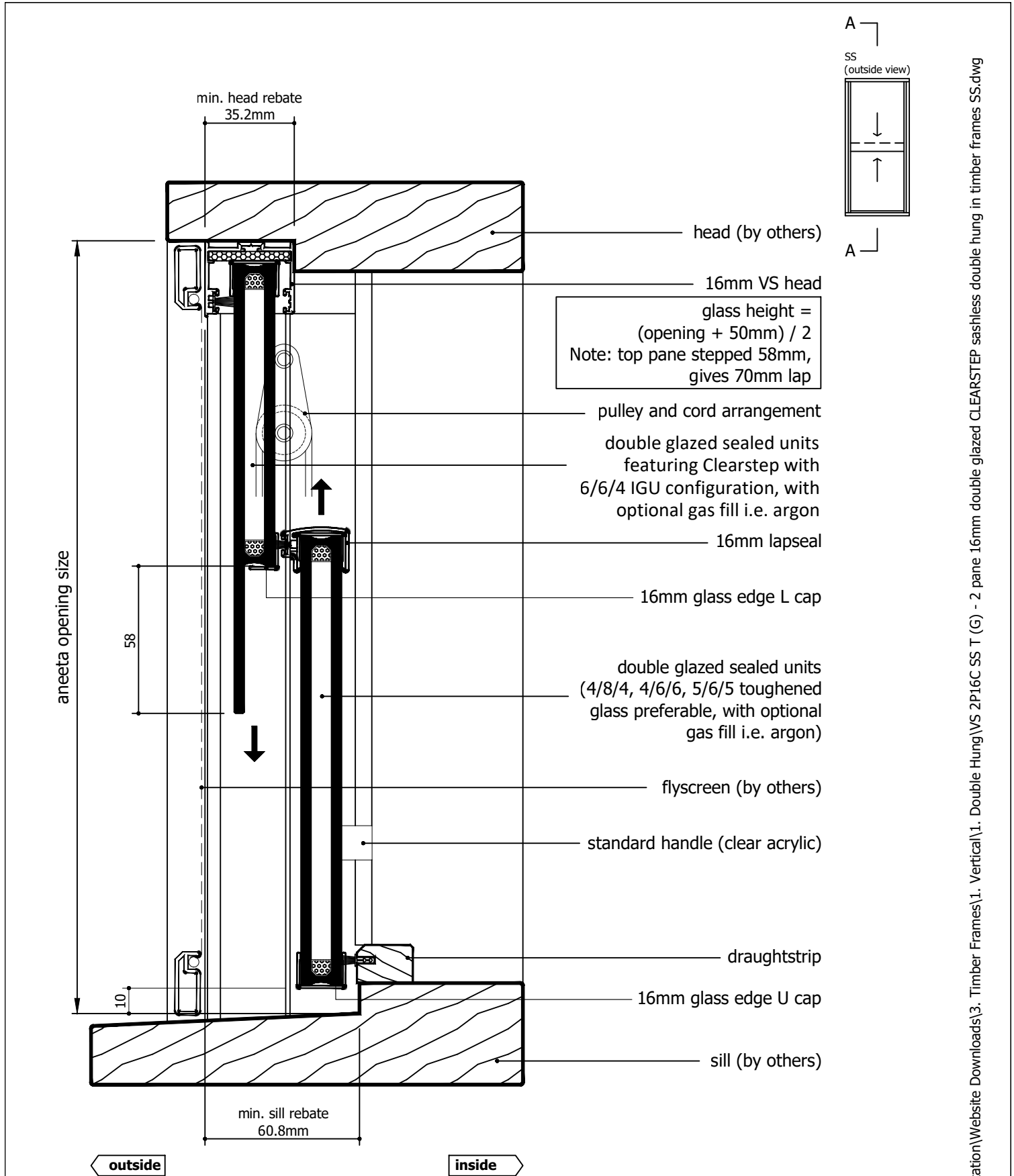
 949 Stud Road, Rowville VIC 3178, ABN 80 062 883 729	
Sheet 13 of 19	Revision: G

Material:	in Timber frame
Finish:	
Die/Part:	
Dwg No:	VS 2P16C SS T


M:\Documentation\Website Downloads\3. Timber Frames\1. Vertical\1. Double Hung\VS 2P16C SS T (G) - 2 pane 16mm double glazed CLEARSTEP sashless double hung in timber frames SS.dwg



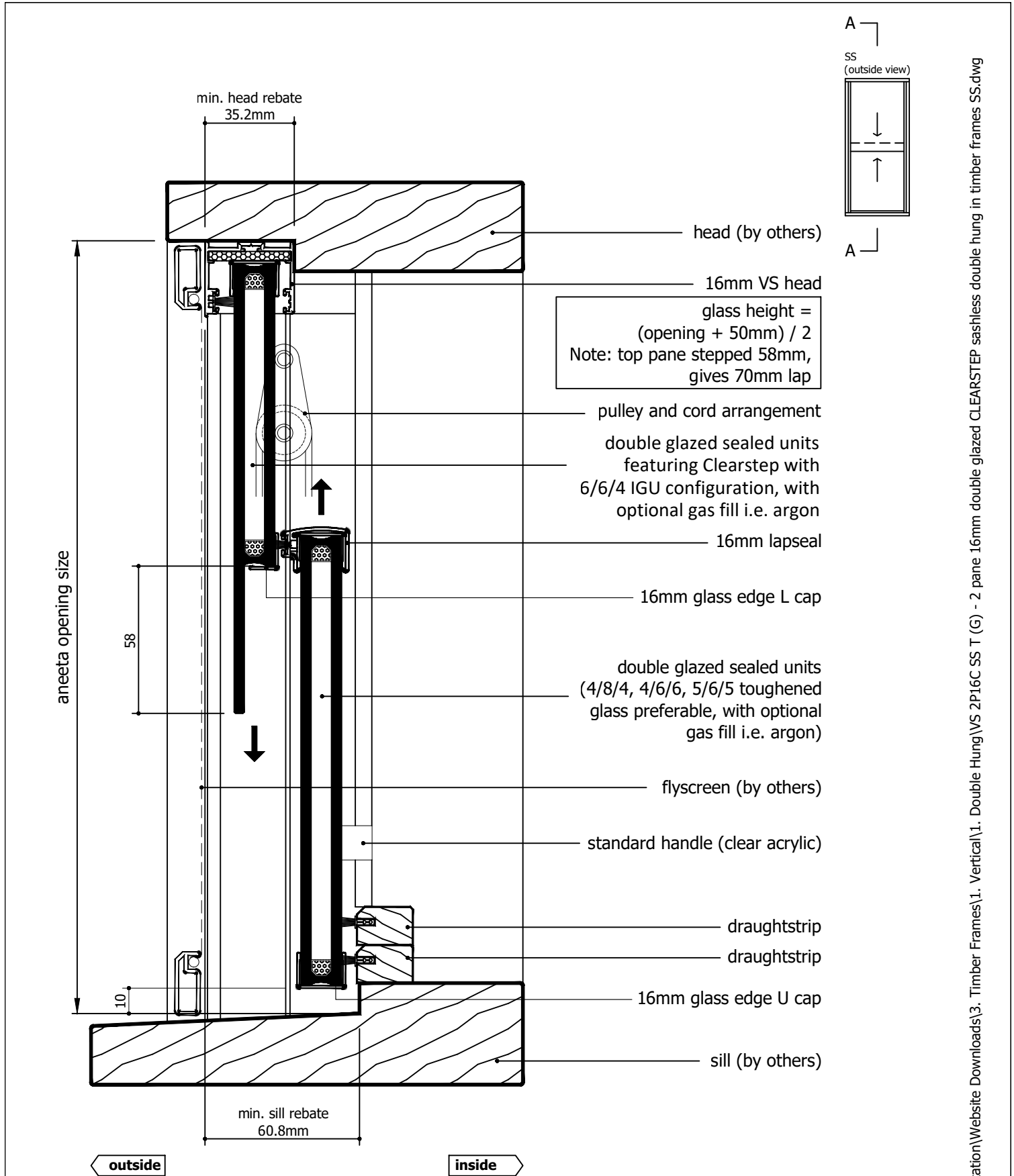
IF IN DOUBT ASK - DO NOT SCALE DRAWING



Rev	Description	Approved By	Date
G	Add description of Clearstep IGU makeup. Delete P008 and replace with P229 - VS Sill	DF	25/8/2025
F	VS 300Pa/800Pa sill adaptor changed to VS Sill/VS HP Sill	DF	Sep2024
E	Updated with new template, deleted continuous handle	SE	May2024
D	Added new lock	SE	Sep2020
C	Update lock, sill, layout	RL	Jun2013
B	Update glass height formula, pulley heights	RL	Nov2010
A	Original Issue	UF	Jan2010

Proprietary and confidential The information contained in this drawing is the sole property of Aneeta Australia. Any reproduction in part or as a whole, without the written permission of Aneeta Australia is prohibited.	Title: 2 pane 16mm double glazed CLEARSTEP sashless double hung in timber frames SS with aluminium covers and draughtstrip at sill vertical section A-A		 949 Stud Road, Rowville VIC 3178, ABN 80 062 883 729		Material:	in Timber frame
					Finish:	
					Die/Part:	
					Dwg No:	VS 2P16C SS T
Drwn: UF	Chk:	Date: Jan 2010	Scale: 1:2@A4	Sheet 14 of 19	Revision: G	

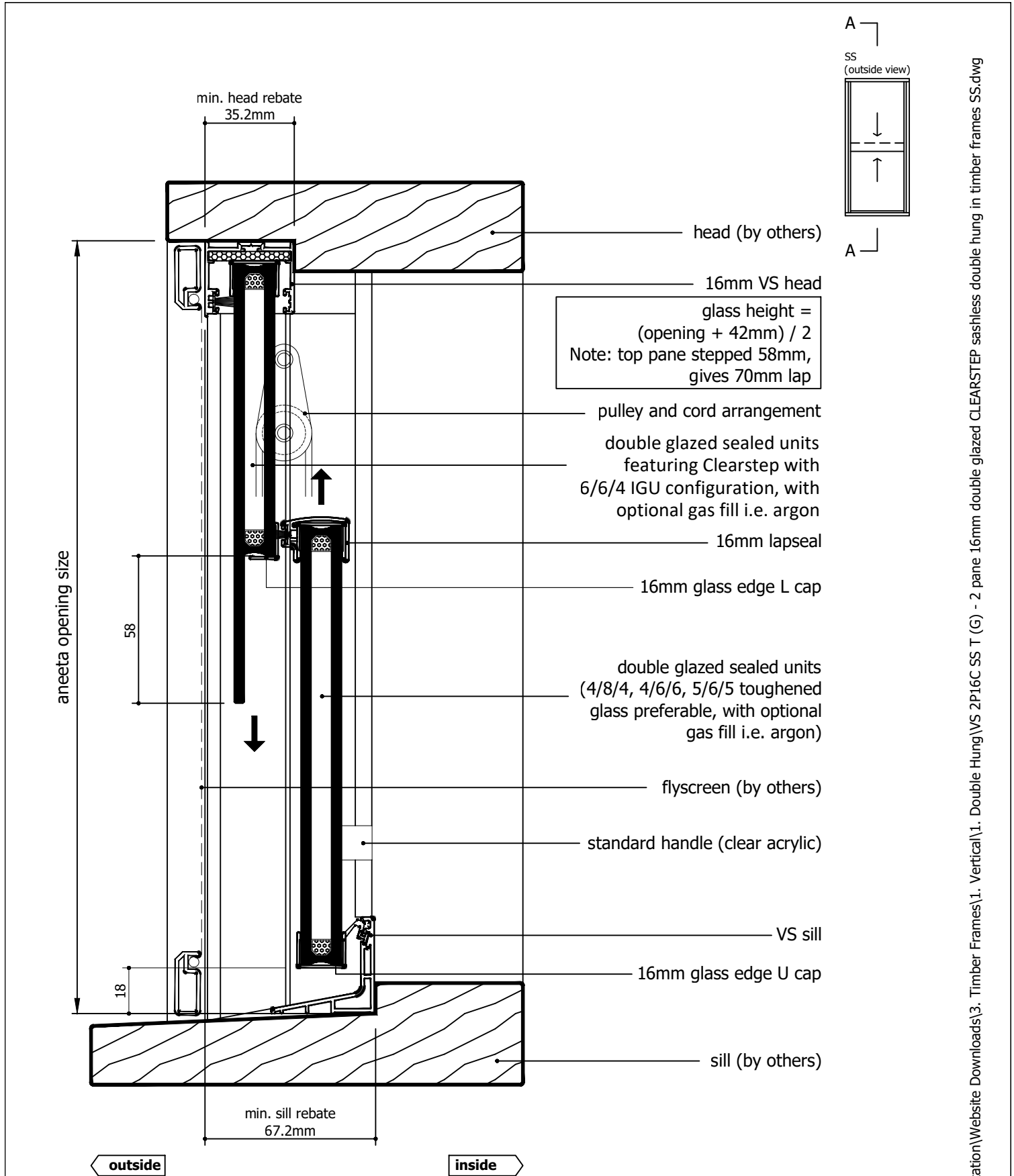
M:\Documentation\Website Downloads\3. Timber Frames\1. Vertical\1. Double Hung\VS 2P16C SS T (G) - 2 pane 16mm double glazed CLEARSTEP sashless double hung in timber frames SS.dwg




Rev	Description	Approved	
		By	Date
G	Add description of Clearstep IGU makeup. Delete P008 and replace with P229 - VS Sill	DF	25/8/2025
F	VS 300Pa/800Pa sill adaptor changed to VS Sill/VS HP Sill	DF	Sep2024
E	Updated with new template, deleted continuous handle	SE	May2024
D	Added new lock	SE	Sep2020
C	Update lock, sill, layout	RL	Jun2013
B	Update glass height formula, pulley heights	RL	Nov2010
A	Original Issue	UF	Jan2010

<div>Proprietary and confidential</div> <div>The information contained in this drawing is the sole property of Aneeta Australia. Any reproduction in part or as a whole, without the written permission of Aneeta Australia is prohibited.</div>	<div>Title: 2 pane 16mm double glazed CLEARSTEP sashless double hung in timber frames SS with aluminium covers and 2 x draughtstrip at sill vertical section A-A</div> <div><div><div></div><div>aneeta</div></div><div>949 Stud Road, Rowville VIC 3178, ABN 80 062 883 729</div></div>				Material: in Timber frame	
					Finish:	
					Die/Part:	
					Dwg No: VS 2P16C SS T	
					Drwn: UF	Chk:

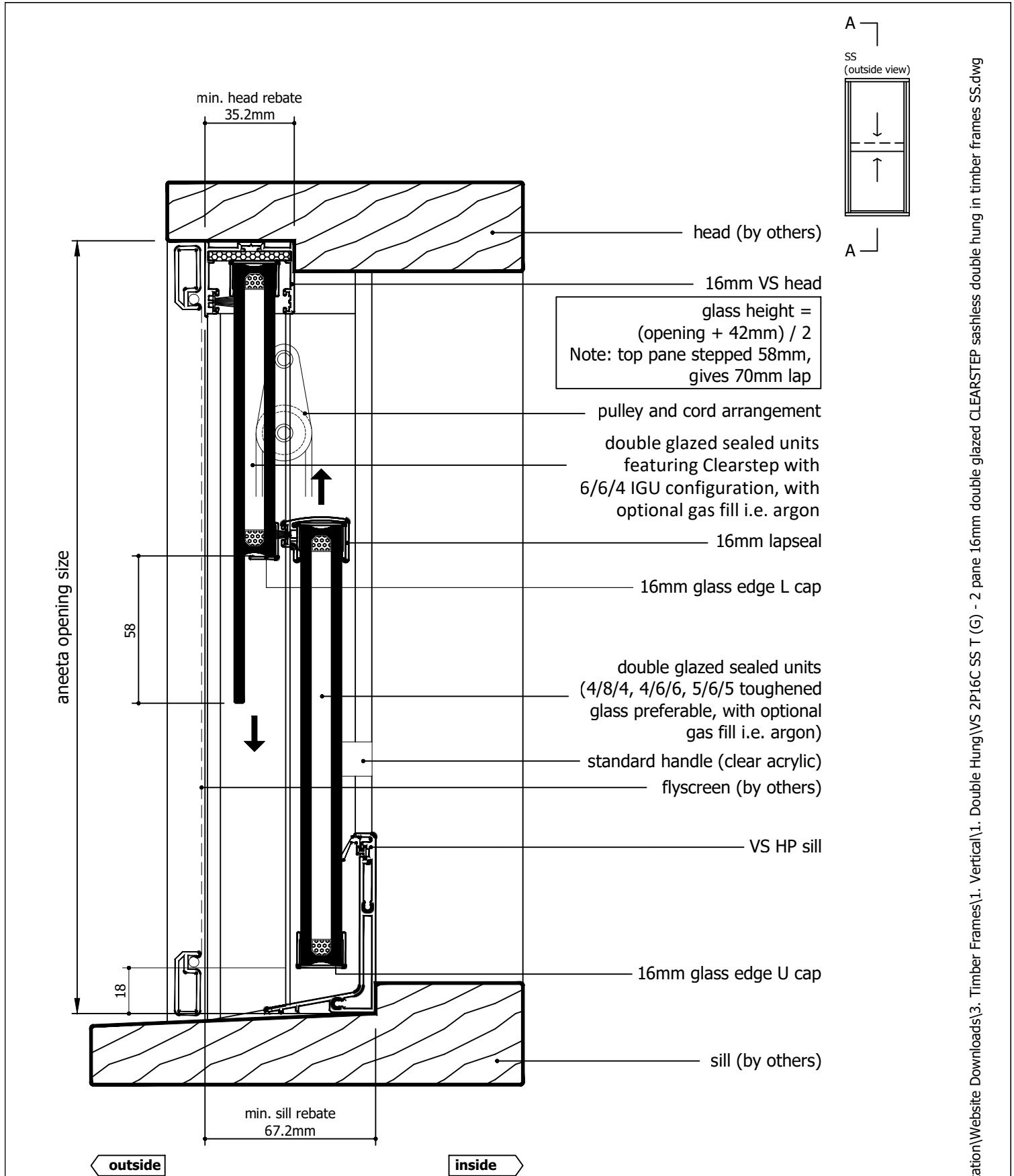
M:\Documentation\Website Downloads\3. Timber Frames\1. Double Hung\VS 2P16C SS T (G) - 2 pane 16mm double glazed CLEARSTEP sashless double hung in timber frames SS.dwg




Rev	Description	Approved By	Date
G	Add description of Clearstep IGU makeup. Delete P008 and replace with P229 - VS Sill	DF	25/8/2025
F	VS 300Pa/800Pa sill adaptor changed to VS Sill/VS HP Sill	DF	Sep2024
E	Updated with new template, deleted continuous handle	SE	May2024
D	Added new lock	SE	Sep2020
C	Update lock, sill, layout	RL	Jun2013
B	Update glass height formula, pulley heights	RL	Nov2010
A	Original Issue	UF	Jan2010

Proprietary and confidential The information contained in this drawing is the sole property of Aneeta Australia. Any reproduction in part or as a whole, without the written permission of Aneeta Australia is prohibited.		Title: 2 pane 16mm double glazed CLEARSTEP sashless double hung in timber frames SS with aluminium covers and VS sill vertical section A-A		 949 Stud Road, Rowville VIC 3178, ABN 80 062 883 729		Material: in Timber frame
						Finish:
						Die/Part:
						Dwg No: VS 2P16C SS T
Drwn: UF	Chk:	Date: Jan 2010	Scale: 1:2@A4	Sheet 16 of 19	Revision: G	

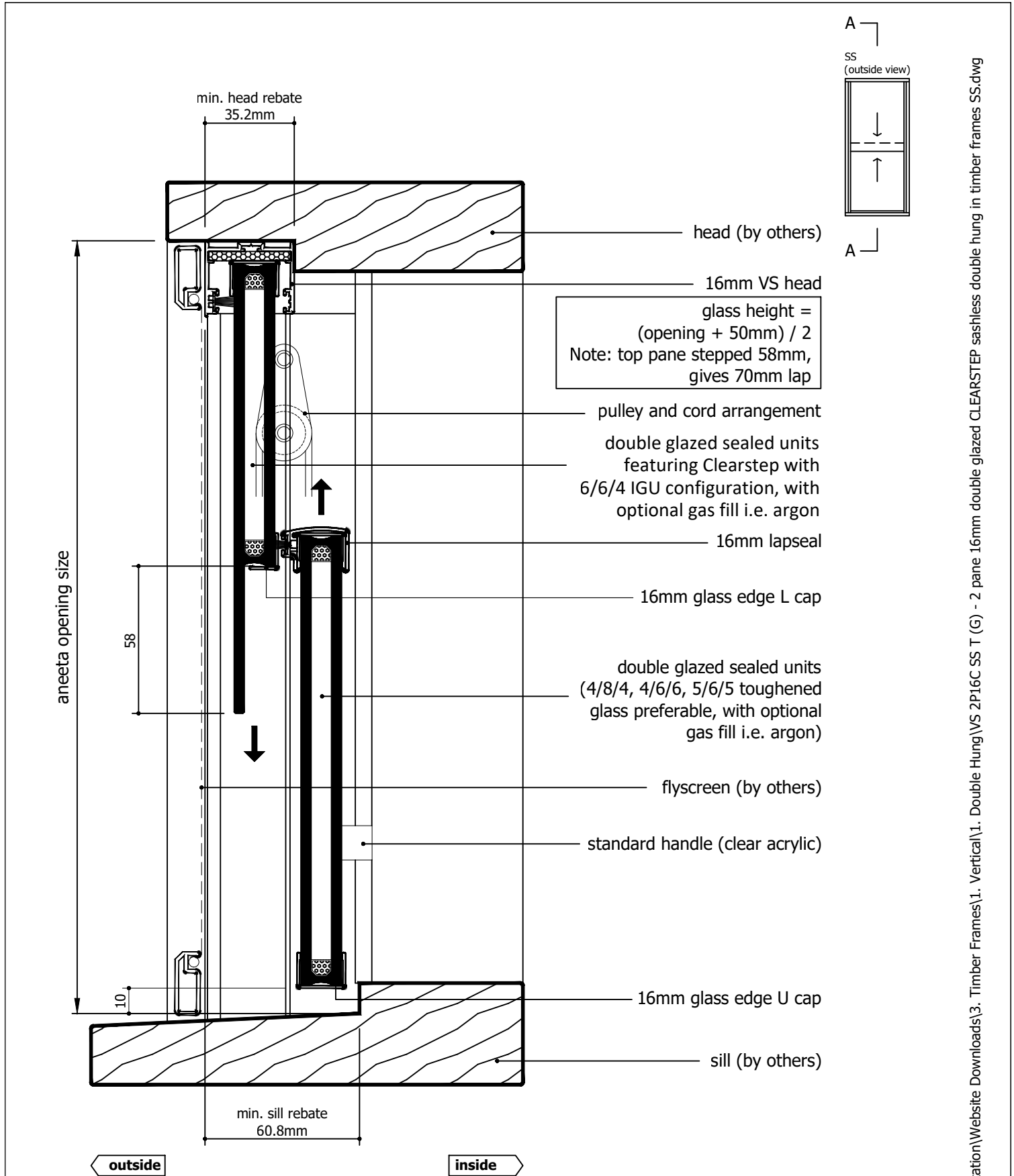
M:\Documentation\Website Downloads\3. Timber Frames\1. Vertical\1. Double Hung\VS 2P16C SS T (G) - 2 pane 16mm double glazed CLEARSTEP sashless double hung in timber frames SS.dwg




Rev	Description	Approved By	Date
G	Add description of Clearstep IGU makeup. Delete P008 and replace with P229 - VS Sill	DF	25/8/2025
F	VS 300Pa/800Pa sill adaptor changed to VS Sill/VS HP Sill	DF	Sep2024
E	Updated with new template, deleted continuous handle	SE	May2024
D	Added new lock	SE	Sep2020
C	Update lock, sill, layout	RL	Jun2013
B	Update glass height formula, pulley heights	RL	Nov2010
A	Original Issue	UF	Jan2010

<div>Proprietary and confidential</div> <div>The information contained in this drawing is the sole property of Aneeta Australia. Any reproduction in part or as a whole, without the written permission of Aneeta Australia is prohibited.</div>	<div>Title: 2 pane 16mm double glazed CLEARSTEP sashless double hung in timber frames SS with aluminium covers and VS HP sill vertical section A-A</div>				<div> 949 Stud Road, Rowville VIC 3178, ABN 80 062 883 729</div>		Material: in Timber frame	
							Finish:	
							Die/Part:	
							Dwg No: VS 2P16C SS T	
Drwn: UF	Chk:	Date: Jan 2010	Scale: 1:20 A4	Sheet 17 of 19	Revision: G			

M:\Documentation\Website Downloads\3. Timber Frames\1. Double Hung\VS 2P16C SS T (G) - 2 pane 16mm double glazed CLEARSTEP sashless double hung in timber frames SS.dwg



Rev	Description	Approved	
		By	Date
G	Add description of Clearstep IGU makeup. Delete P008 and replace with P229 - VS Sill	DF	25/8/2025
F	VS 300Pa/800Pa sill adaptor changed to VS Sill/VS HP Sill	DF	Sep2024
E	Updated with new template, deleted continuous handle	SE	May2024
D	Added new lock	SE	Sep2020
C	Update lock, sill, layout	RL	Jun2013
B	Update glass height formula, pulley heights	RL	Nov2010
A	Original Issue	UF	Jan2010

Proprietary and confidential The information contained in this drawing is the sole property of Aneeta Australia. Any reproduction in part or as a whole, without the written permission of Aneeta Australia is prohibited.	Title: 2 pane 16mm double glazed CLEARSTEP sashless double hung in timber frames SS with aluminium covers and no sill adaptor vertical section A-A		 949 Stud Road, Rowville VIC 3178, ABN 80 062 883 729	Material: in Timber frame	
				Finish:	
				Die/Part:	
				Dwg No: VS 2P16C SS T	
Drwn: UF		Chk:	Date: Jan 2010	Scale: 1:2@A4	Sheet 18 of 19
		Revision: G			

M:\Documentation\Website Downloads\3. Timber Frames\1. Double Hung\VS 2P16C SS T (G) - 2 pane 16mm double glazed CLEARSTEP sashless double hung in timber frames SS.dwg

glass width = opening - 40mm

aneeta opening size

flyscreen (optional by others)

16mm combination tee

top pane

bottom pane

aluminium cover

lock

jamb (by others)


SS
(outside view)

outside

inside

64.7

Rev	Description	Approved	
		By	Date
G	Add description of Clearstep IGU makeup. Delete P008 and replace with P229 - VS Sill	DF	25/8/2025
F	VS 300Pa/800Pa sill adaptor changed to VS Sill/VS HP Sill	DF	Sep2024
E	Updated with new template, deleted continuous handle	SE	May2024
D	Added new lock	SE	Sep2020
C	Update lock, sill, layout	RL	Jun2013
B	Update glass height formula, pulley heights	RL	Nov2010
A	Original Issue	UF	Jan2010

<div>Proprietary and confidential</div> <div>The information contained in this drawing is the sole property of Aneeta Australia. Any reproduction in part or as a whole, without the written permission of Aneeta Australia is prohibited.</div>	<div>Title: 2 pane 16mm double glazed CLEARSTEP sashless double hung in timber frames SS with aluminium covers</div> <div>horizontal section B-B</div>				<div> 949 Stud Road, Rowville VIC 3178, ABN 80 062 883 729</div>		Material: in Timber frame	
							Finish:	
							Die/Part:	
							Dwg No: VS 2P16C SS T	
Drwn: UF	Chk:	Date: Jan 2010	Scale: 1:1@A4	Sheet 19 of 19	Revision: G			

M:\Documentation\Website Downloads\3. Timber Frames\1. Vertical\1. Double Hung\VS 2P16C SS T (G) - 2 pane 16mm double glazed CLEARSTEP sashless double hung in timber frames SS.dwg