

$$\text{glass height} = (\text{opening} + 44\text{mm}) / 2$$


aneeta insert is shown here in 100mm commercial framing but it suits a variety of residential and commercial frame types

Rev	Description	Approved	
		By	Date
E	New template, delete continuous handle, update boxes	SE	Jan2024
D	Add new lock and pin	SE	Dec2020
C	Update profiles, boxes, update part positions and layout	RL	Mar2013
B	Adjust glass height formula	UF	Nov2010
A	Original Issue	UF	Jan2010

Proprietary and confidential
The information contained in this drawing is the sole property of Aneeta Australia. Any reproduction in part or as a whole, without the written permission of Aneeta Australia is prohibited.

Title:
2 pane servery 6mm sashless vertical slider in aluminium frames
(bottom pane fixed - small box)
vertical section A-A

Drwn: Chk: Date: Jan 2010 Scale: 1:2@A4 Sheet 1 of 8



949 Stud Road, Rowville VIC 3178, ABN 80 062 883 729

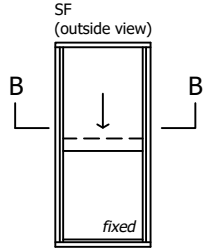
Revision: E

Material:	in Aluminium Frame
Finish:	
Die/Part:	
Dwg No:	VS 2P6 SF A

N:\Corporate\TECHNICAL\Drawing Files\Aneeta product CAD drawings\VS 2P6 SF A (E).dwg

IF IN DOUBT ASK - DO NOT SCALE DRAWING

glass width = opening - 100mm



aneeta opening size

flyscreen (optional by others)

6mm combination tee

top pane

bottom pane

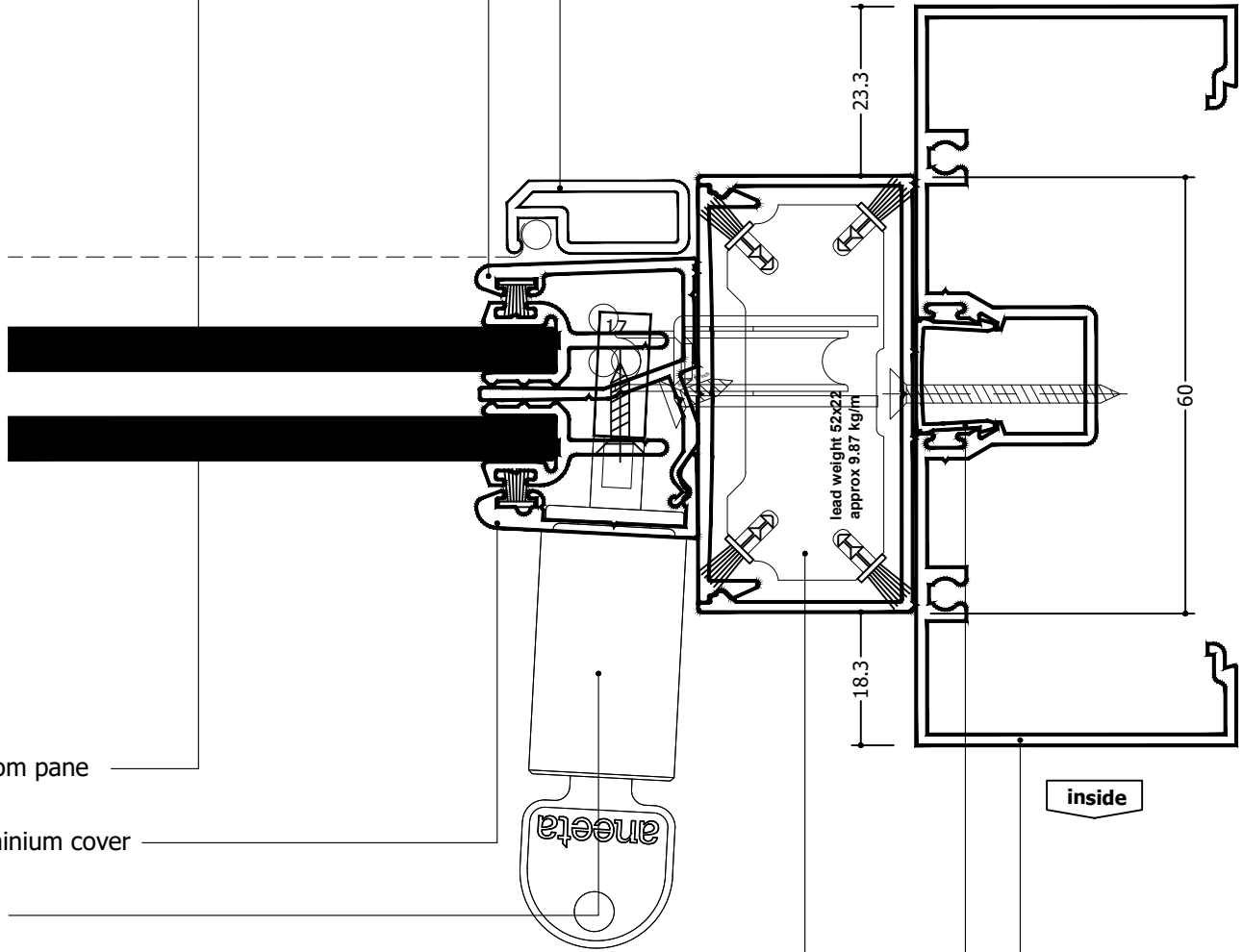
aluminium cover

lock

60 x 30mm box containing lead weight
to counter balance moving pane of glass

flush filler (by others)

jamb (by others)



Rev	Description	Approved	
		By	Date
E	New template, delete continuous handle, update boxes	SE	Jan2024
D	Add new lock and pin	SE	Dec2020
C	Update profiles, boxes, update part positions and layout	RL	Mar2013
B	Adjust glass height formula	UF	Nov2010
A	Original Issue	UF	Jan2010

Proprietary and confidential
The information contained in this drawing is the sole property of Aneeta Australia. Any reproduction in part or as a whole, without the written permission of Aneeta Australia is prohibited.

Title:
2 pane servery 6mm sashless vertical slider in aluminium frames
(bottom pane fixed - small box)
horizontal section B-B



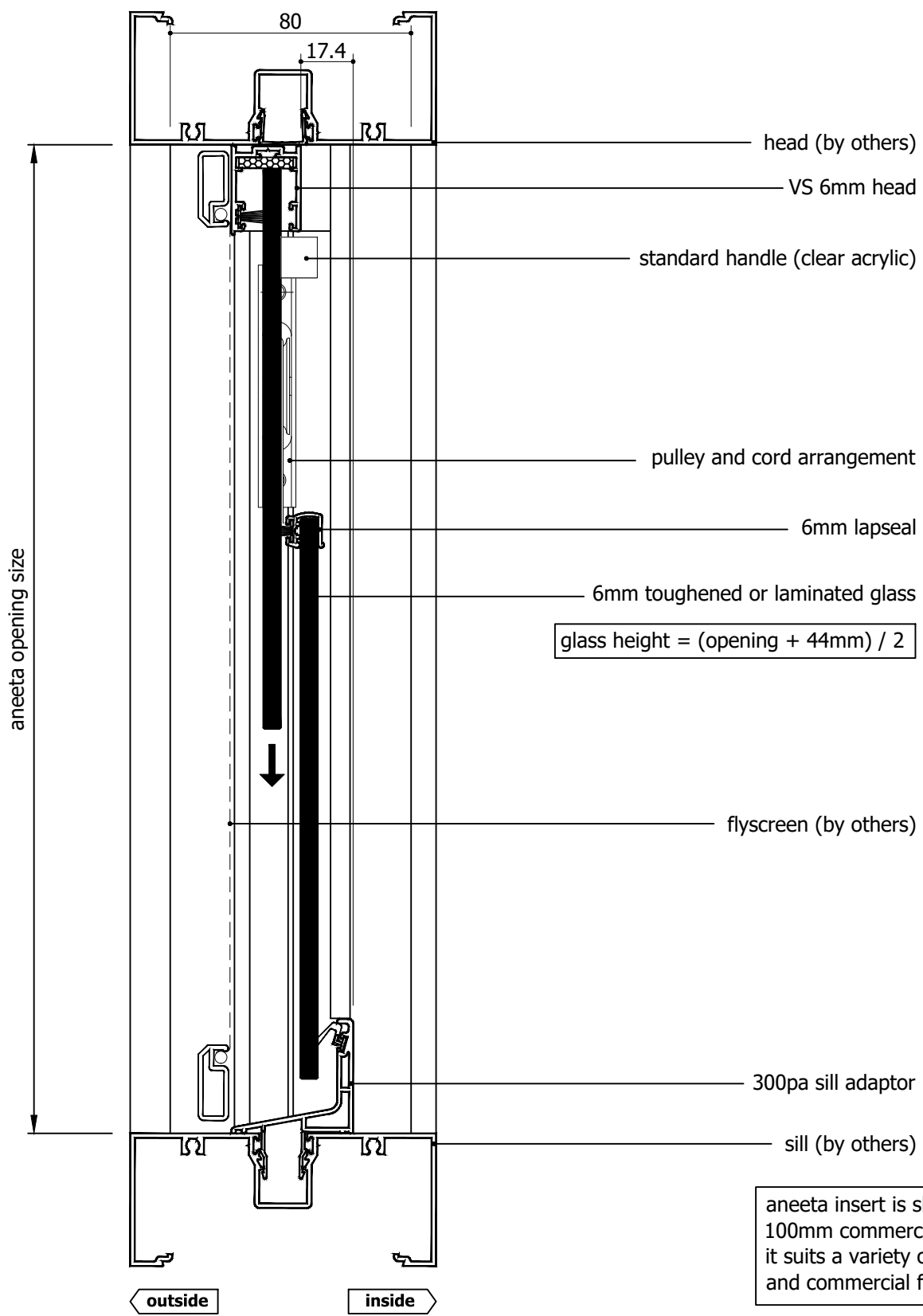
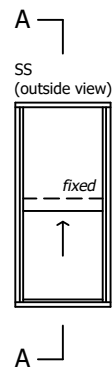
949 Stud Road, Rowville VIC 3178, ABN 80 062 883 729

Material:	in Aluminium Frame
Finish:	
Die/Part:	
Dwg No:	VS 2P6 SF A

Drwn:	Chk:	Date: Jan 2010	Scale: 1:1@A4	Sheet 2 of 8	Revision: E
-------	------	----------------	---------------	--------------	-------------

N:\Corporate\TECHNICAL\Drawing Files\Aneeta product CAD drawings\VS\2P SERVERY\VS 2P6 SF A (E).dwg

IF IN DOUBT ASK - DO NOT SCALE DRAWING



$$\text{glass height} = (\text{opening} + 44\text{mm}) / 2$$


aneeta insert is shown here in 100mm commercial framing but it suits a variety of residential and commercial frame types

Rev	Description	Approved	
		By	Date
E	New template, delete continuous handle, update boxes	SE	Jan2024
D	Add new lock and pin	SE	Dec2020
C	Update profiles, boxes, update part positions and layout	RL	Mar2013
B	Adjust glass height formula	UF	Nov2010
A	Original Issue	UF	Jan2010

Proprietary and confidential
The information contained in this drawing is the sole property of Aneeta Australia. Any reproduction in part or as a whole, without the written permission of Aneeta Australia is prohibited.

Title:
2 pane servery 6mm sashless vertical slider in aluminium frames
(bottom pane fixed - medium box)
vertical section A-A

Drwn: Chk: Date: Jan 2010 Scale: 1:2@A4 Sheet 3 of 8



949 Stud Road, Rowville VIC 3178, ABN 80 062 883 729

Revision: E

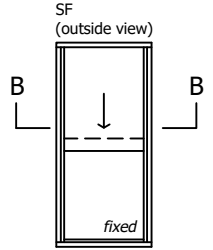
Material: in Aluminium Frame
Finish:
Die/Part:
Dwg No: **VS 2P6 SF A**

N:\Corporate\TECHNICAL\Drawing Files\Aneeta product CAD drawings\VS 2P6 SF A (E).dwg

IF IN DOUBT ASK - DO NOT SCALE DRAWING

glass width = opening - 110mm

aneeta opening size

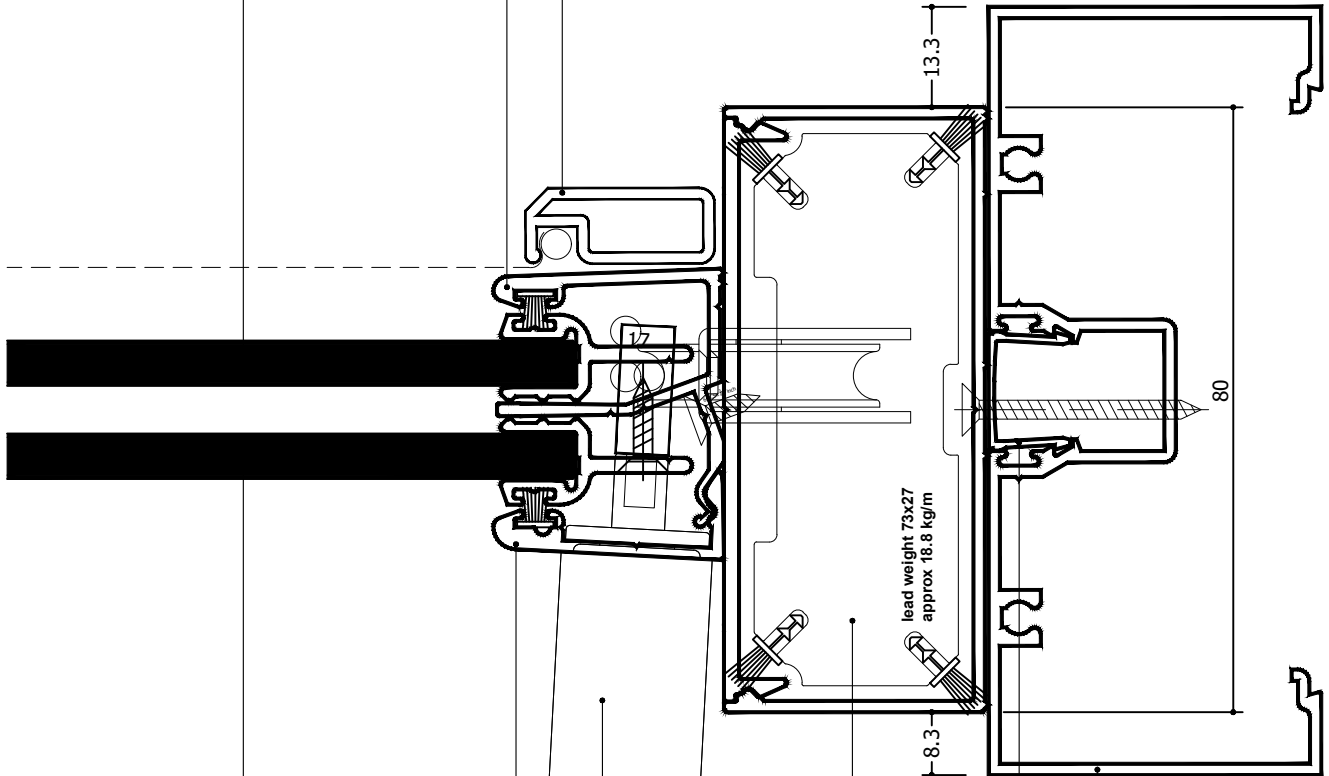


flyscreen (optional by others)

6mm combination tee

top pane

outside



bottom pane

aluminium cover

lock

80 x 35mm box containing lead weight to counter balance moving pane of glass

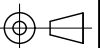
flush filler (by others)

jamb (by others)

inside

Rev	Description	Approved	
		By	Date
E	New template, delete continuous handle, update boxes	SE	Jan2024
D	Add new lock and pin	SE	Dec2020
C	Update profiles, boxes, update part positions and layout	RL	Mar2013
B	Adjust glass height formula	UF	Nov2010
A	Original Issue	UF	Jan2010

N:\Corporate\TECHNICAL\Drawing Files\Aneeta product CAD drawings\VS 2P6 SF A (E).dwg



IF IN DOUBT ASK - DO NOT SCALE DRAWING

Proprietary and confidential

The information contained in this drawing is the sole property of Aneeta Australia. Any reproduction in part or as a whole, without the written permission of Aneeta Australia is prohibited.

Title:
2 pane servery 6mm sashless vertical slider in aluminium frames
(bottom pane fixed - medium box)
horizontal section B-B



949 Stud Road, Rowville VIC 3178, ABN 80 062 883 729

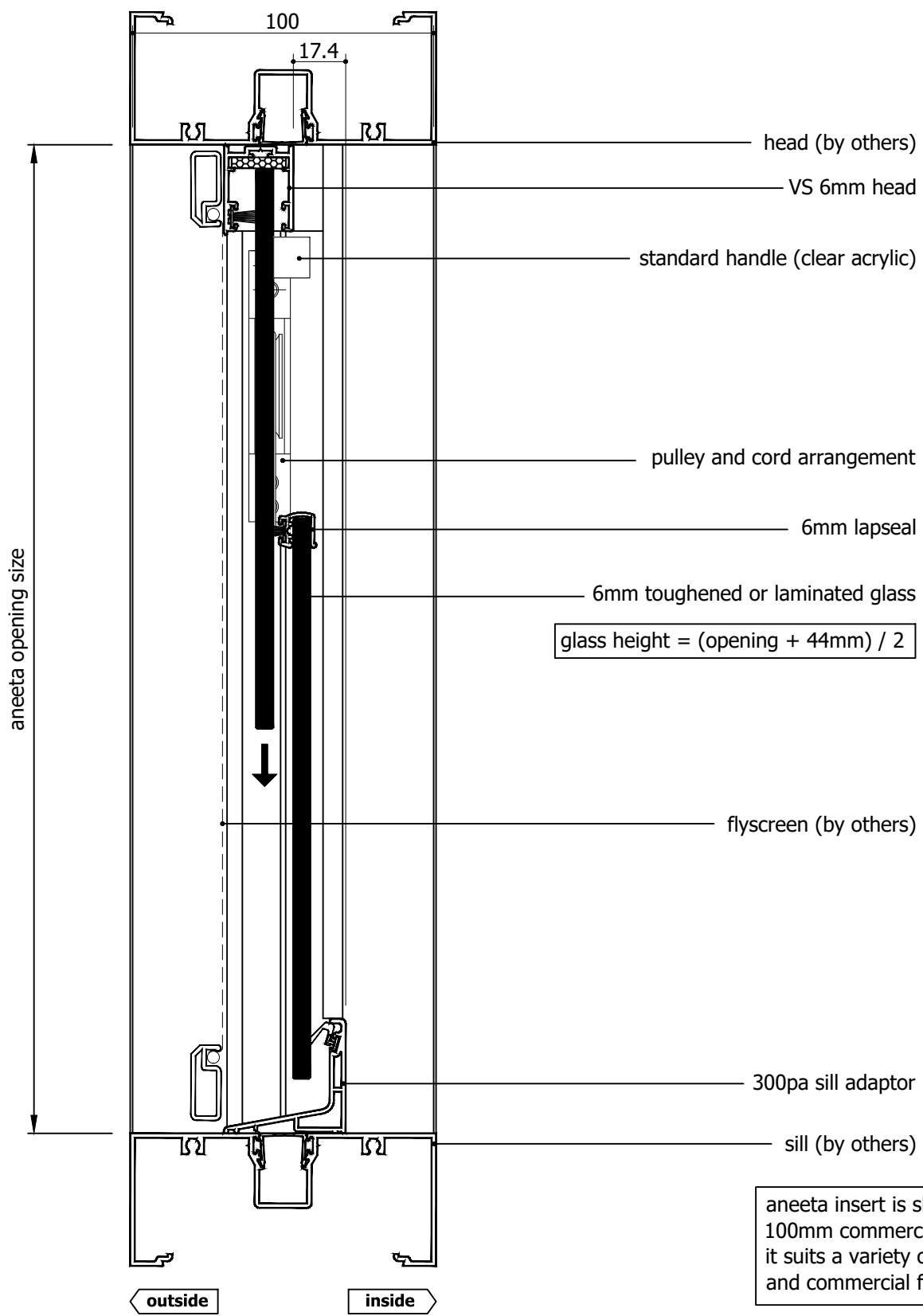
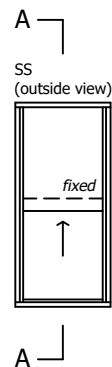
Material: in Aluminium Frame

Finish:

Die/Part:

Dwg No: VS 2P6 SF A

Drwn: Chk: Date: Jan 2010 Scale: 1:1@A4 Sheet 4 of 8 Revision: E



$$\text{glass height} = (\text{opening} + 44\text{mm}) / 2$$


aneeta insert is shown here in 100mm commercial framing but it suits a variety of residential and commercial frame types

Rev	Description	Approved	
		By	Date
E	New template, delete continuous handle, update boxes	SE	Jan2024
D	Add new lock and pin	SE	Dec2020
C	Update profiles, boxes, update part positions and layout	RL	Mar2013
B	Adjust glass height formula	UF	Nov2010
A	Original Issue	UF	Jan2010

Proprietary and confidential
The information contained in this drawing is the sole property of Aneeta Australia. Any reproduction in part or as a whole, without the written permission of Aneeta Australia is prohibited.

Title:
2 pane servery 6mm sashless vertical slider in aluminium frames
(bottom pane fixed - large box)
vertical section A-A

Drwn: Chk: Date: Jan 2010 Scale: 1:2@A4



949 Stud Road, Rowville VIC 3178, ABN 80 062 883 729

Sheet 5 of 8 Revision: E

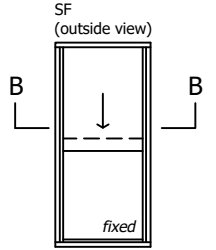
Material:	in Aluminium Frame
Finish:	
Die/Part:	
Dwg No:	VS 2P6 SF A

N:\Corporate\TECHNICAL\Drawing Files\Aneeta product CAD drawings\VS 2P6 SF A (E).dwg

IF IN DOUBT ASK - DO NOT SCALE DRAWING

glass width = opening - 130mm

aneeta opening size



flyscreen (optional by others)

6mm combination tee

top pane

bottom pane

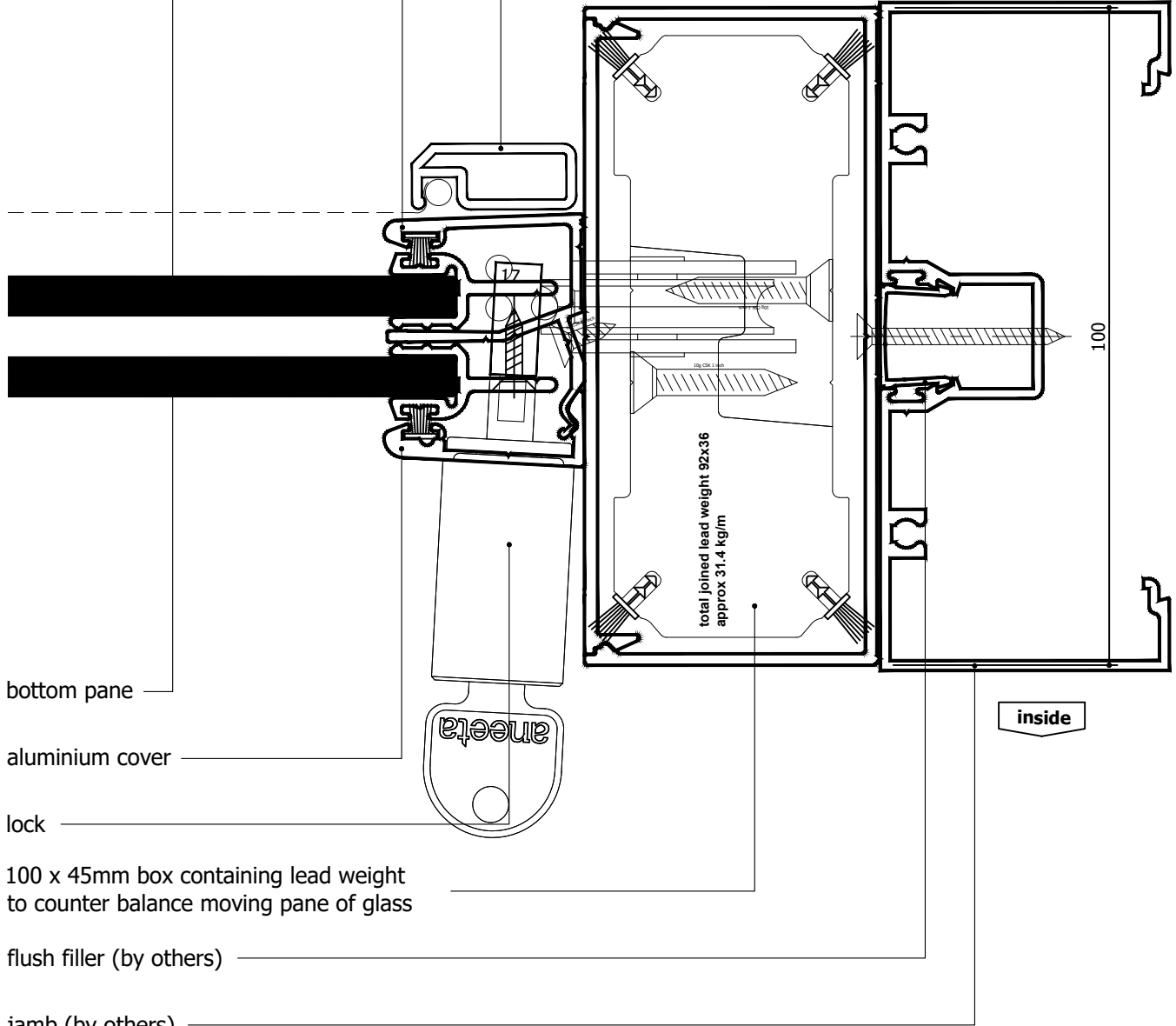
aluminium cover

lock

100 x 45mm box containing lead weight
to counter balance moving pane of glass

flush filler (by others)

jamb (by others)



Rev	Description	Approved	
		By	Date
E	New template, delete continuous handle, update boxes	SE	Jan2024
D	Add new lock and pin	SE	Dec2020
C	Update profiles, boxes, update part positions and layout	RL	Mar2013
B	Adjust glass height formula	UF	Nov2010
A	Original Issue	UF	Jan2010

Proprietary and confidential
The information contained in this drawing is the sole property of Aneeta Australia. Any reproduction in part or as a whole, without the written permission of Aneeta Australia is prohibited.

Title:
2 pane servery 6mm sashless vertical slider in aluminium frames
(bottom pane fixed - large box)
horizontal section B-B



949 Stud Road, Rowville VIC 3178, ABN 80 062 883 729

Drwn: Chk: Date: Jan 2010 Scale: 1:1@A4

Sheet 6 of 8

Revision: E

Material: in Aluminium Frame

Finish:

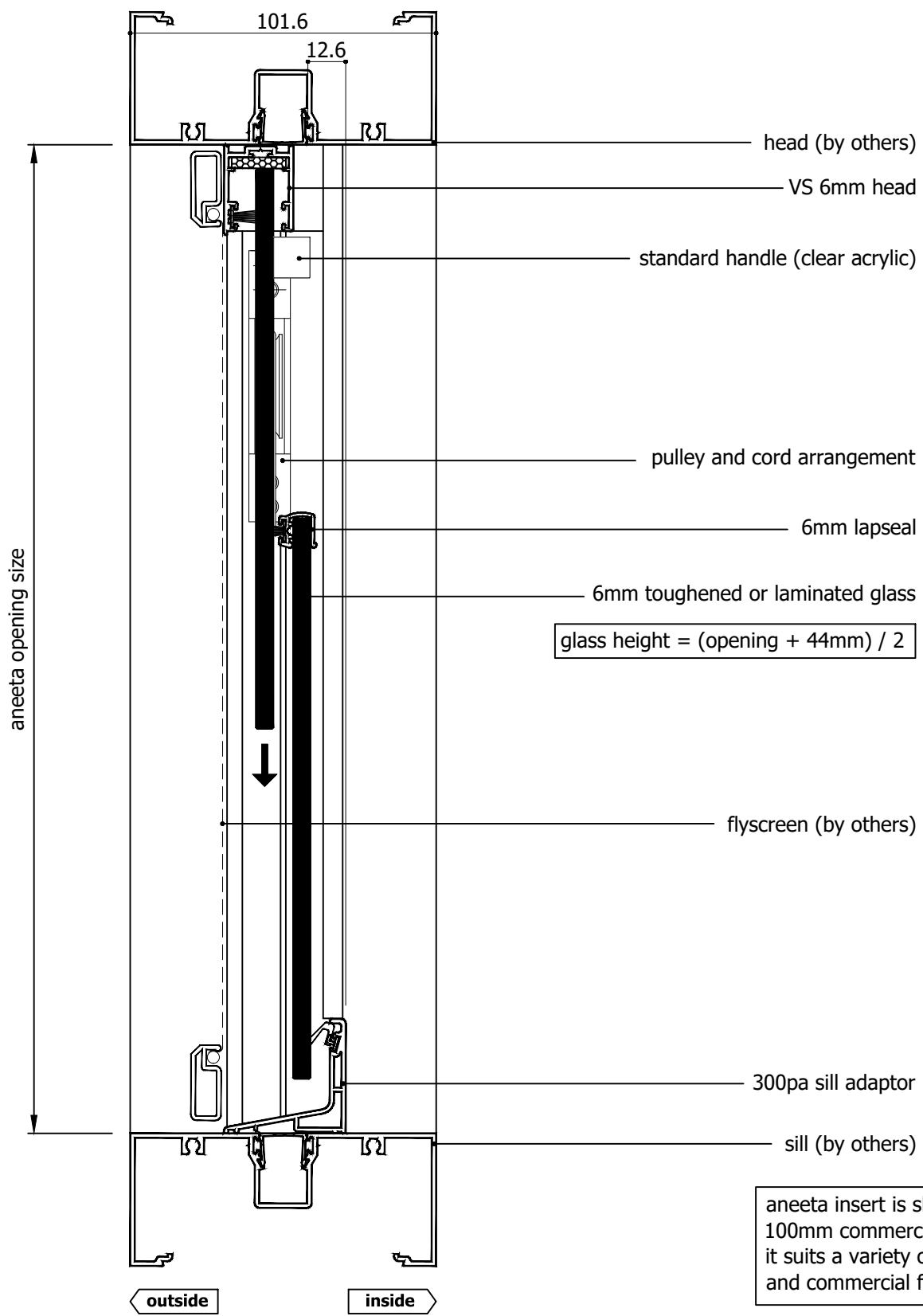
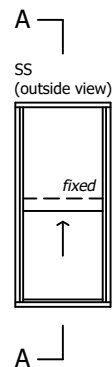
Die/Part:

Dwg No: VS 2P6 SF A

N:\Corporate\TECHNICAL\Drawing Files\Aneeta product CAD drawings\VS\2P SERVERY\VS 2P6 SF A (E).dwg



IF IN DOUBT ASK - DO NOT SCALE DRAWING



$$\text{glass height} = (\text{opening} + 44\text{mm}) / 2$$


aneeta insert is shown here in 100mm commercial framing but it suits a variety of residential and commercial frame types

Rev	Description	Approved	
		By	Date
E	New template, delete continuous handle, update boxes	SE	Jan2024
D	Add new lock and pin	SE	Dec2020
C	Update profiles, boxes, update part positions and layout	RL	Mar2013
B	Adjust glass height formula	UF	Nov2010
A	Original Issue	UF	Jan2010

Proprietary and confidential
The information contained in this drawing is the sole property of Aneeta Australia. Any reproduction in part or as a whole, without the written permission of Aneeta Australia is prohibited.

Title:
2 pane servery 6mm sashless vertical slider in aluminium frames
(bottom pane fixed - extra large box)
vertical section A-A

Drwn: Chk: Date: Jan 2010 Scale: 1:2@A4 Sheet 7 of 8



949 Stud Road, Rowville VIC 3178, ABN 80 062 883 729

Revision: E

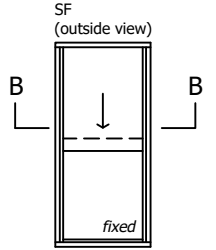
Material: in Aluminium Frame
Finish:
Die/Part:
Dwg No: **VS 2P6 SF A**

N:\Corporate\TECHNICAL\Drawing Files\Aneeta product CAD drawings\VS\2P SERVERY\VS 2P6 SF A (E).dwg

IF IN DOUBT ASK - DO NOT SCALE DRAWING

glass width = opening - 192mm

aneeta opening size



flyscreen (optional by others)

6mm combination tee

top pane

bottom pane

aluminium cover

lock

101.6 x 76.2mm box containing lead weight to counter balance moving pane of glass

flush filler (by others)

jamb (by others)

outside

inside

2 of joined lead weights 73x27
approx 2 x 18.8 = 37.6 kg/m²

101.6

Rev	Description	Approved	
		By	Date
E	New template, delete continuous handle, update boxes	SE	Jan2024
D	Add new lock and pin	SE	Dec2020
C	Update profiles, boxes, update part positions and layout	RL	Mar2013
B	Adjust glass height formula	UF	Nov2010
A	Original Issue	UF	Jan2010

Proprietary and confidential
The information contained in this drawing is the sole property of Aneeta Australia. Any reproduction in part or as a whole, without the written permission of Aneeta Australia is prohibited.

Title:
2 pane servery 6mm sashless vertical slider in aluminium frames
(bottom pane fixed - extra large box)
horizontal section B-B



949 Stud Road, Rowville VIC 3178, ABN 80 062 883 729

Drwn: Chk: Date: Jan 2010 Scale: 1:1@A4 Sheet 8 of 8 Revision: E

Material: in Aluminium Frame
Finish:
Die/Part:
Dwg No: VS 2P6 SF A

IF IN DOUBT ASK - DO NOT SCALE DRAWING

N:\Corporate\TECHNICAL\Drawing Files\Aneeta product CAD drawings\VS 2P6 SF A (E).dwg